

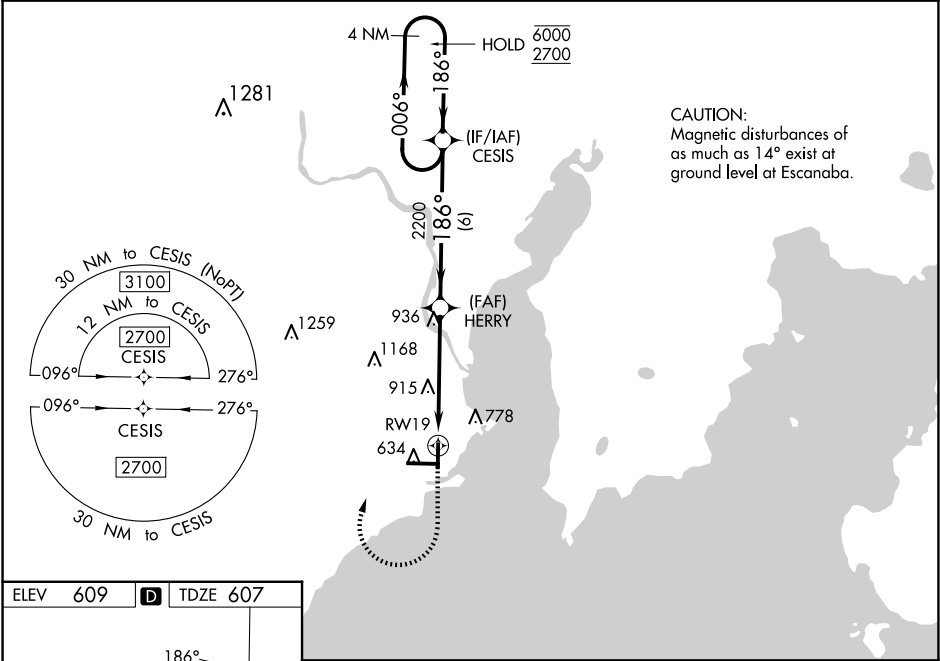
APP CRS	Rwy Idg	5015
186°	TDZE	607
	Apt Elev	609

RNAV (GPS) RWY 19

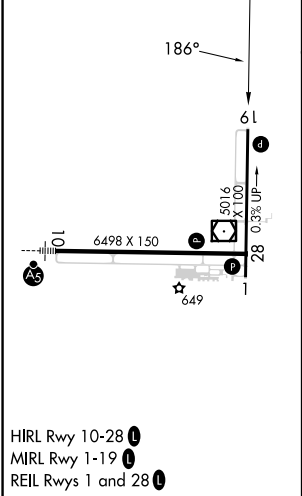
DELTA COUNTY (E/SC)




RNP APCH - GPS.	MISSED APPROACH: Climb to 1100, then climbing right turn to 2700 direct CESIS and hold.
-----------------	--

AWOS-3PT 121.425	MINNEAPOLIS CENTER 127.65	UNICOM 122.8 (CTAF) 0
---------------------	------------------------------	--------------------------



ELEV 609	D	TDZE 607
----------	---	----------



1100	2700	CESIS
		
4 NM Holding Pattern		