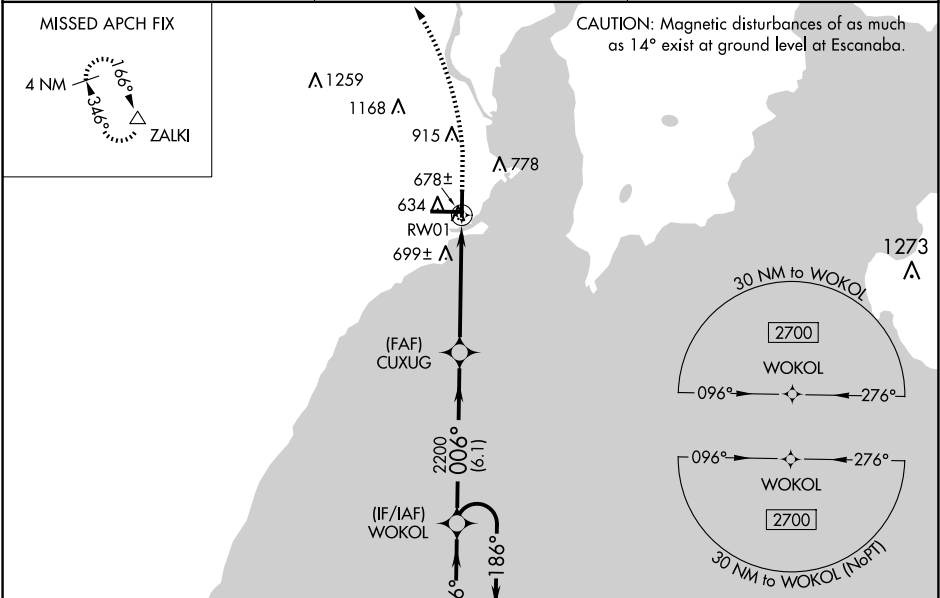


WAAS CH <b>69333</b> <b>W01A</b>	APP CRS <b>006°</b>	Rwy Idg TDZE Apt Elev	<b>5015</b> <b>600</b> <b>609</b>
--	------------------------	-----------------------------	---

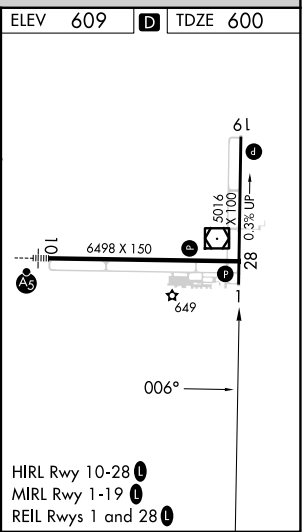
RNAV (GPS) RWY 1  
DELTA COUNTY (ESC)

RNP APCH - GPS.	MISSED APPROACH: Climb to 1100, then climbing left turn to 2800 direct ZALKI and hold.
Rwy 1 helicopter visibility reduction below 3/4 SM NA.	

AWOS-3PT <b>121.425</b>	MINNEAPOLIS CENTER <b>127.65</b>	UNICOM <b>122.8 (CTAF) 0</b>
----------------------------	-------------------------------------	---------------------------------



4 NM Holding Pattern WOKOL	VGSI and descent angles not coincident (VGSI angle 3.00°/TCH 27°).	1100	2800	ZALKI
6000	186°	006°	006°	
2700				
		CUXUG	2200	1 NM to RW01
		3.00°	TCH 45	
	6.1 NM	3.9 NM	1 NM	
CATEGORY	A	B	C	D
LP MDA		940-1	340 (400-1)	
LNAY MDA		960-1	360 (400-1)	
CIRCLING	1060-1 451 (500-1)	1080-1 471 (500-1)	1280-2 671 (700-2)	1480-2 3/4 871 (900-2 3/4)



EC-1, 10 JUL 2025 to 07 AUG 2025

EC-1, 10 JUL 2025 to 07 AUG 2025