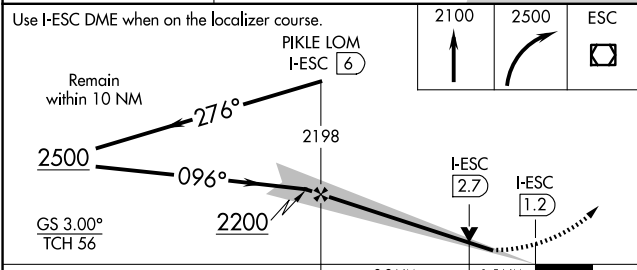
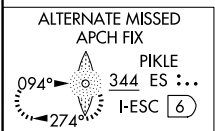
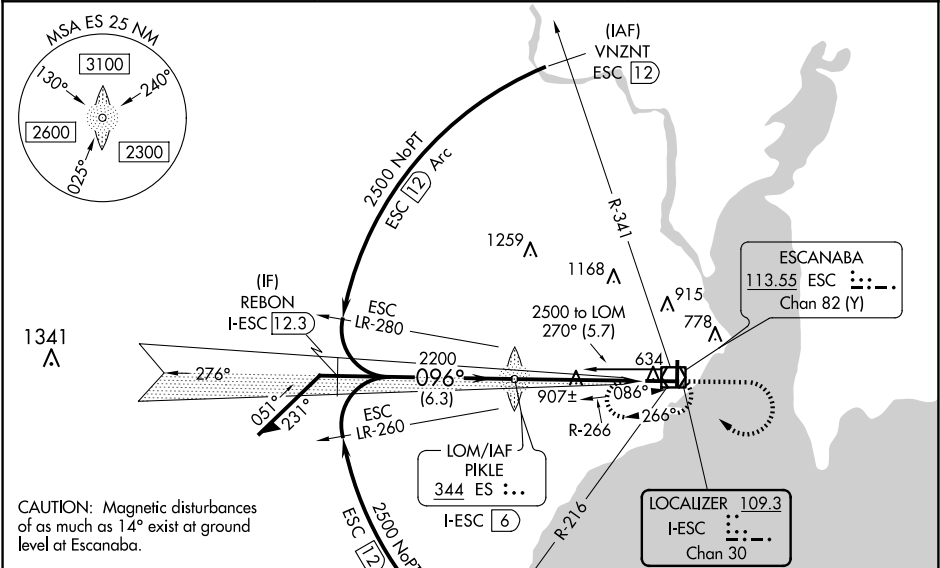


LOC/DME I-ESC <b>109.3</b> Chan 30	APP CRS <b>096°</b>	Rwy ldg <b>6498</b> TDZE <b>609</b> Apt Elev <b>609</b>
--	------------------------	---

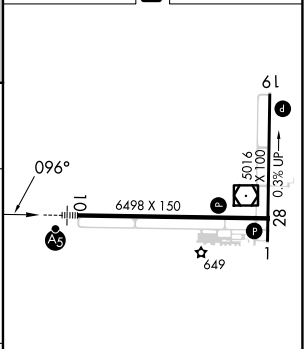
ILS or LOC RWY 10  
DELTA COUNTY (ESC)

ADF or DME required for procedure entry. ADF or DME required for LOC only.	MALSR 	MISSED APPROACH: Climb to 2100 then climbing right turn to 2500 direct ESC VOR/DME and hold.
--	-----------	---

AWOS-3PT <b>121.425</b>	MINNEAPOLIS CENTER <b>127.65</b>	UNICOM <b>122.8 (CTAF) 0</b>
----------------------------	-------------------------------------	---------------------------------



ELEV 609	D	TDZE 609
----------	---	----------



CATEGORY	A	B	C	D
S-ILS 10		809-½	200 (200-½)	
S-LOC 10	1160-½	551 (600-½)	1160-1½	551 (600-1½)
CIRCLING	1160-1	551 (600-1)	1280-2 671 (700-2)	1480-2¾ 871 (900-2¾)

HIRL Rwy 10-28	0
MIRL Rwy 1-19	0
REIL Rws 1 and 28	0
FAF to MAP 4.8 NM	
Knots	60 90 120 150 180
Min:Sec	4:48 3:12 2:24 1:55 1:36

EC-1, 10 JUL 2025 to 07 AUG 2025

EC-1, 10 JUL 2025 to 07 AUG 2025