

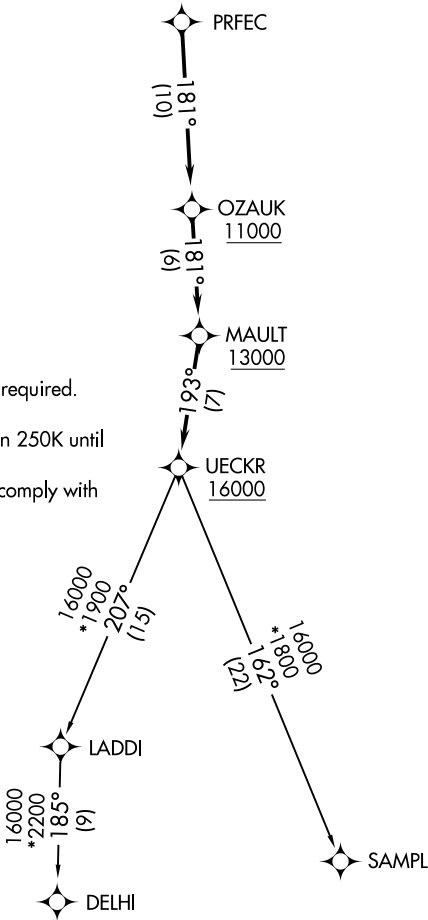
ASOS
121.425
CLNC DEL
120.15
MILWAUKEE DEP CON
135.875 317.725



TOP ALTITUDE:
ASSIGNED BY ATC

TAKEOFF MINIMUMS
Rwys 4, 14, 22, 32: Standard.

- NOTE: RNAV 1.
NOTE: GPS or DME/DME/IRU required.
NOTE: RADAR required.
NOTE: Turbojet aircraft maintain 250K until advised by ATC.
NOTE: Notify ATC if unable to comply with crossing restrictions.



NOTE: Chart not to scale.

DEPARTURE ROUTE DESCRIPTION

Climb on assigned heading for RADAR vectors to PRFEC, thence....

....on track 181° to cross OZAUK at or above 11000, then on track 181° to cross MAULT at or above 13000, then on track 193° to cross UECKR at or above 16000, then on (transition). Maintain ATC assigned altitude, expect filed altitude ten minutes after departure.

DELHI TRANSITION (UECKR6.DELHI)
SAMPL TRANSITION (UECKR6.SAMPL)

EC-3, 10 JUL 2025 to 07 AUG 2025

EC-3, 10 JUL 2025 to 07 AUG 2025