

WAAS CH 97516 W04A	APP CRS 039°	Rwy Idg 5840 TDZE 668 Apt Elev 674
--	------------------------	---

RNAV (GPS) RWY 4

BATTEN INTL (RAC)

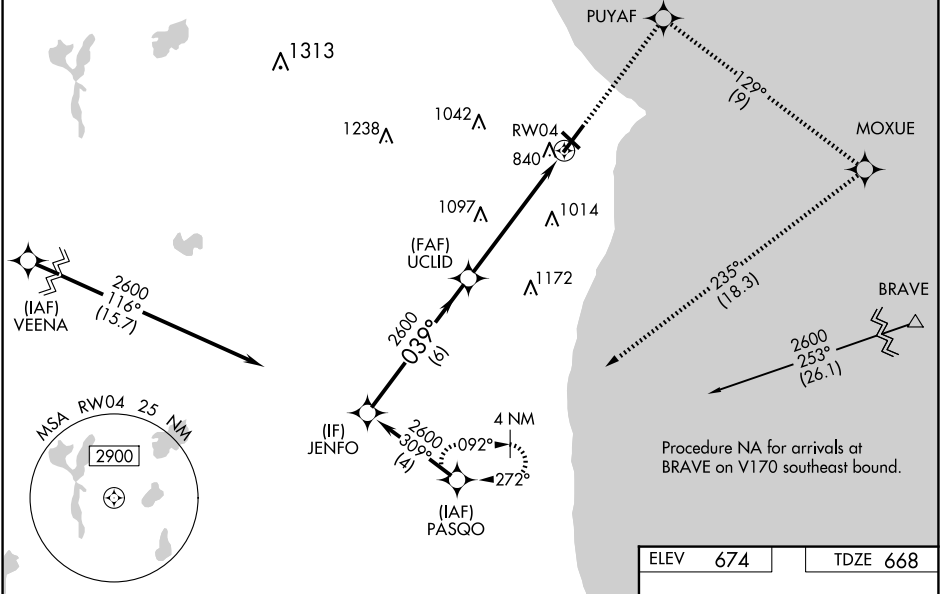
⚠

Baro-VNAV NA when using General Mitchell Intl altimeter setting. For uncompensated Baro-VNAV systems, LNAV/VNAV NA below -20°C (-4°F) or above 54°C (130°F). DME/DME RNP-0.3 NA. VDP NA when using General Mitchell Intl altimeter setting. When local altimeter setting not received, use General Mitchell Intl altimeter setting: increase LPV DA to 1023 and all visibilities ½ SM; increase LNAV/VNAV DA to 1135 and all visibilities ½ SM; increase all MDA 40 feet and visibility Cat C and D ¼ SM. Circling Rwy 14 NA at night. Rwy 4 helicopter visibility reduction below ¾ SM NA. Inop table does not apply.

MALSF

MISSED APPROACH:
Climb to 2600 direct PUYAF and right turn on track 129° to MOXUE and right turn on track 235° to PASQO and hold.

ASOS 121.425	MILWAUKEE APP CON 135.875 317.725	CLNC DEL 120.15	UNICOM 123.075 (CTAF) 1
------------------------	---	---------------------------	-----------------------------------



2600 PUYAF

MOXUE

tr 129°

PASQO

tr 235°

JENFO

2600

039°

UCLID

2600

*1.5 NM to RWY04

RWY04

GP 3.00°

TCH 45

6 NM

4.4 NM

1.5 NM

TABLE

CATEGORY	A	B	C	D
LPV DA	988-1		320 (400-1)	
LNAV/VNAV DA	1100-1½		432 (500-1½)	
LNAV MDA	1180-1	512 (600-1)	1180-1¾	512 (600-1¾)
CIRCLING	1180-1	506 (600-1)	1380-2 706 (800-2)	1380-2¼ 706 (800-2¼)

ELEV 674

TDZE 668

HIRL Rwy 4-22 1

MIRL Rwy 14-32 1

REIL Rws 14, 22 and 32 1

RACINE, WISCONSIN

42°46'N-87°49'W

BATTEN INTL (RAC)

Orig-B 22JUN17

RNAV (GPS) RWY 4