

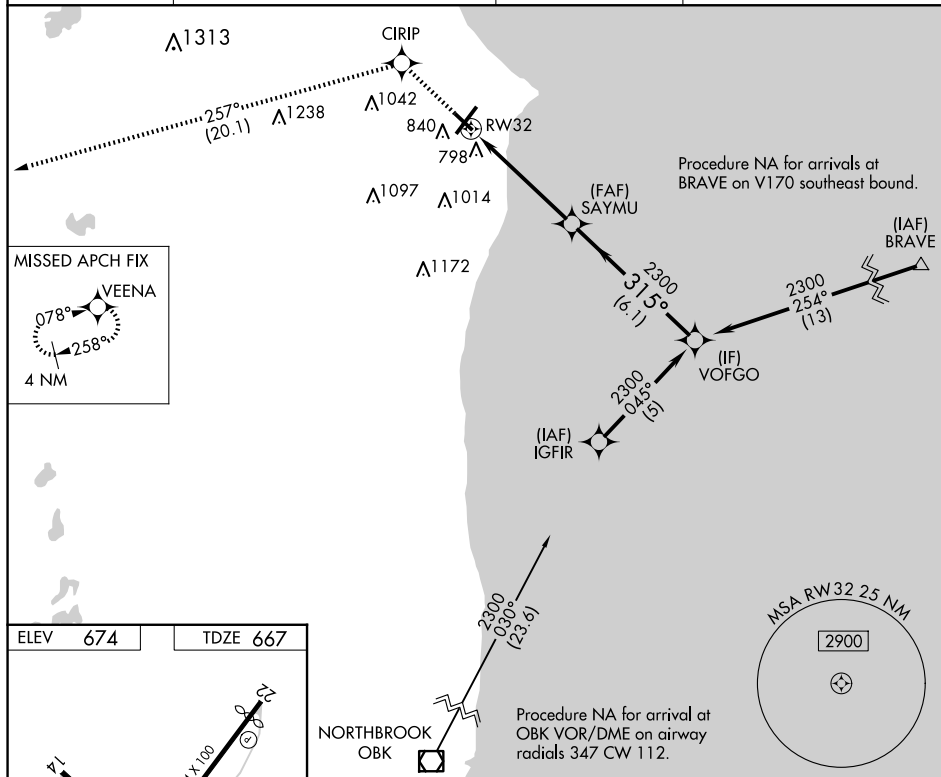
APP CRS 315°	Rwy Idg TDZE Apt Elev	4421 667 674
------------------------	-----------------------------	---

RNAV (GPS) RWY 32
BATTEN INTL (RAC)

T DME/DME RNP-0.3 NA. VDP NA when using General Mitchell Intl altimeter setting.
A When local altimeter setting not received, use General Mitchell Intl altimeter setting:
 Increase all MDA 40 feet and visibility Cat C and D $\frac{1}{4}$ SM. Rwy 32 helicopter
 visibility reduction below $\frac{3}{4}$ SM NA. Circling Rwy 14 NA at night.

MISSED APPROACH. Climb to 3000 direct CIRIP and track 257° to VEENA and hold.

ASOS 121.425	MILWAUKEE APP CON 135.875 317.725	CLNC DEL 120.15	UNICOM 123.075 (CTAF) 0
------------------------	---	---------------------------	-----------------------------------



Plan View: Shows the approach path to RWY 32. The approach is from the south, with a 315° heading. The approach path is marked with a 0.3% up slope. The approach path is marked with a 0.3% up slope. The approach path is marked with a 0.3% up slope.

Profile View: Shows the approach path with a 315° heading and a 0.3% up slope. The approach path is marked with a 0.3% up slope. The approach path is marked with a 0.3% up slope. The approach path is marked with a 0.3% up slope.

CATEGORY	A	B	C	D
LNAV MDA	1060-1	393 (400-1)	1060-1 $\frac{1}{8}$	393 (400-1 $\frac{1}{8}$)
C CIRCLING	1140-1 466 (500-1)	1160-1 486 (500-1)	1380-2 706 (800-2)	1380-2 $\frac{1}{4}$ 706 (800-2 $\frac{1}{4}$)