

EC-3, 10 JUL 2025 to 07 AUG 2025

RACINE, WISCONSIN

AL-5121 (FAA)

23110

WAAS CH <b>53516</b> <b>W22A</b>	APP CRS <b>219°</b>	Rwy Idg TDZE <b>666</b> Apt Elev <b>674</b>
--	------------------------	---

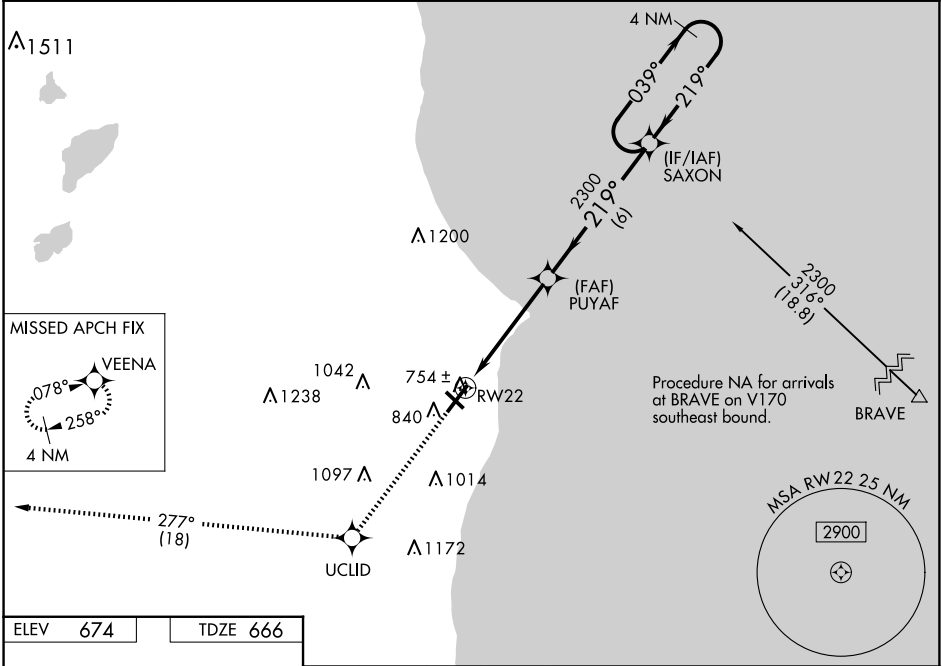
RNAV (GPS) RWY 22

BATTEN INTL (RAC)

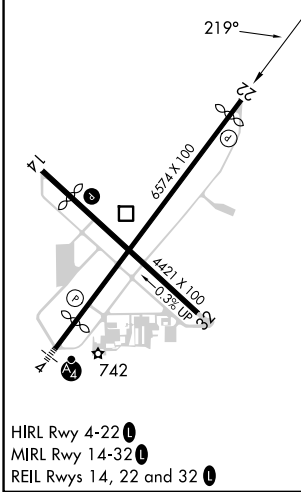
**⚠** For uncompensated Baro-VNAV systems, LNAV/VNAV NA below -19°C (-2°F) or above 54°C (130°F).  
**⚠** DME/DME RNP-0.3 NA. When local altimeter setting not received, use General Mitchell Intl altimeter setting: increase LPV DA to 984 and all visibilities  $\frac{1}{8}$  SM; increase LNAV/VNAV DA to 1032 and all visibilities  $\frac{1}{4}$  SM; increase all MDA 40 feet and LNAV Cat C and D visibility  $\frac{1}{8}$  SM and Circling Cat C and D visibility  $\frac{1}{4}$  SM. Circling Rwy 14 NA at night. Rwy 22 helicopter visibility reduction below  $\frac{1}{4}$  SM NA. Baro-VNAV and VDP NA when using General Mitchell Intl altimeter setting.

**MISSED APPROACH:**  
Climb to 3000 direct UCLID and track 277° to VEENA and hold.

ASOS <b>121.425</b>	MILWAUKEE APP CON <b>135.875 317.725</b>	CLNC DEL <b>120.15</b>	UNICOM <b>123.075 (CTAF) 0</b>
------------------------	---	---------------------------	-----------------------------------



ELEV <b>674</b>	TDZE <b>666</b>
-----------------	-----------------



3000	UCLID	tr 277°	VEENA	VGSI and RNAV glidepath not coincident (VGSI Angle 3.00/TCH 46).
				4 NM Holding Pattern
			PUYAF	SAXON
			2300	2300
			219°	039°
			2300	2300
			1 NM	3.9 NM
			6 NM	
				GP 3.00° TCH 55
CATEGORY	A	B	C	D
LPV DA		949- $\frac{7}{8}$	283 (300- $\frac{7}{8}$ )	
LNAV/VNAV DA		997-1	331 (400-1)	
LNAV MDA		1020-1	354 (400-1)	
CIRCLING	1140-1 466 (500-1)	1160-1 486 (500-1)	1380-2 706 (800-2)	1380-2 $\frac{1}{4}$ 706 (800-2 $\frac{1}{4}$ )

RACINE, WISCONSIN  
Orig-B 22JUN17

42°46'N-87°49'W

BATTEN INTL (RAC)

RNAV (GPS) RWY 22

EC-3, 10 JUL 2025 to 07 AUG 2025