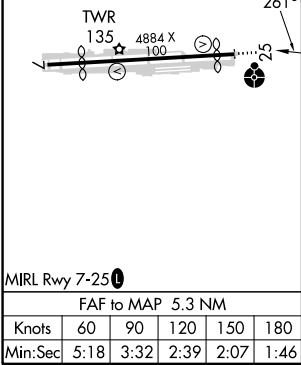
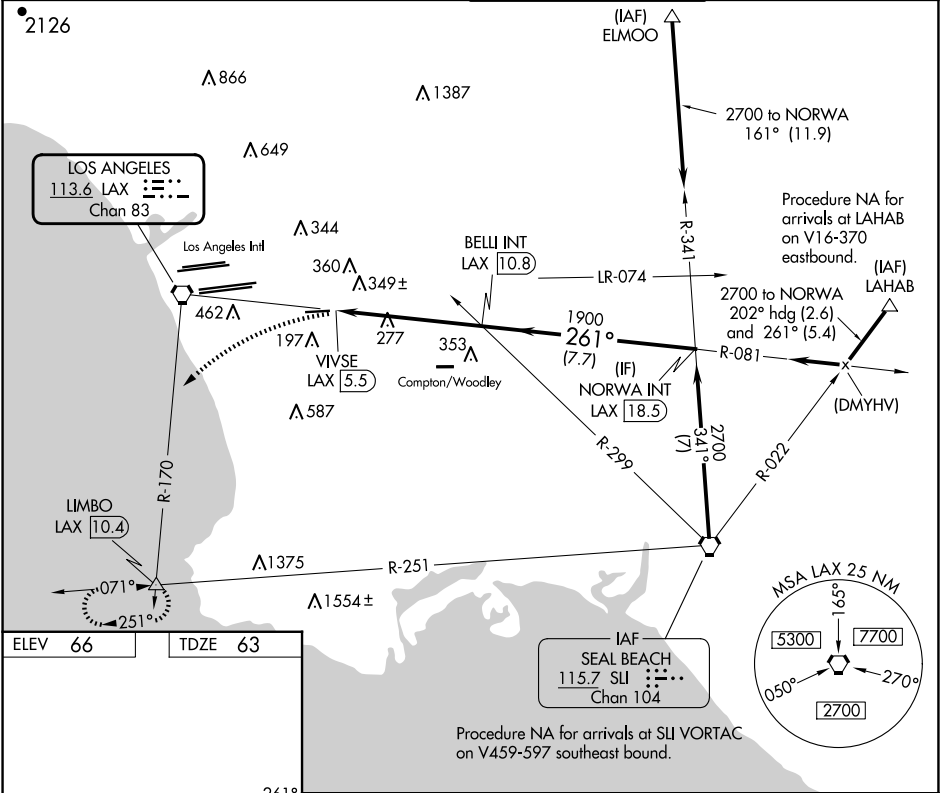


VORTAC LAX	APP CRS	Rwy Idg	4194
113.6	261°	TDZE	63
Chan 83		Apt Elev	66

JACK NORTHROP FLD/HAWTHORNE MUNI (HHR)  
VOR RWY 25

<p>⚠ Circling NA north of Rwy 7-25. Rwy 25 helicopter visibility reduction below 1 SM NA. When local altimeter setting not received, use Los Angeles Intl altimeter setting. Circling Rwy 7 NA at night. Inop table does not apply to S-25 Cats A and B. For inop ALS, increase S-25 Cats C/D visibility to 1½.</p>	<p>ODALS</p> <p>⬆</p>	<p>MISSED APPROACH: Climbing left turn to 3000 via heading 210° and LAX VORTAC R-170 to LIMBO INT/ LAX 10.4 DME and hold.</p>
---	-----------------------	---

ATIS 118.4	SOCAL APP CON 124.9 269.0	HAWTHORNE TOWER★ 121.1 (CTAF) 0 257.8	GND CON 125.1
---------------	------------------------------	--	------------------



	LAX R-170	LIMBO △	VGSI and descent angles not coincident (VGSI Angle 3.50/TCH 26).	NORWA INT LAX 18.5
			BELLI INT LAX 10.8	2700
			VIVSE LAX 5.5	1900
			3.04° TCH 40	Procedure Turn NA
			0.3	5.3 NM
				7.7 NM
CATEGORY	A	B	C	D
S-25	620-1	557 (600-1)	620-1⅓ 557 (600-1⅓)	
⬢ CIRCLING	620-1	554 (600-1)	780-2 714 (800-2)	780-2¼ 714 (800-2¼)

SW-3, 10 JUL 2025 to 07 AUG 2025

SW-3, 10 JUL 2025 to 07 AUG 2025