

WAAS CH <b>65825</b> <b>W25A</b>	APP CRS <b>253°</b>	Rwy Idg <b>4194</b> TDZE <b>63</b> Apt Elev <b>66</b>
----------------------------------------	------------------------	-------------------------------------------------------------

## RNAV (GPS) RWY 25

JACK NORTHROP FLD/HAWTHORNE MUNI (HHR)

RNP APCH - GPS.



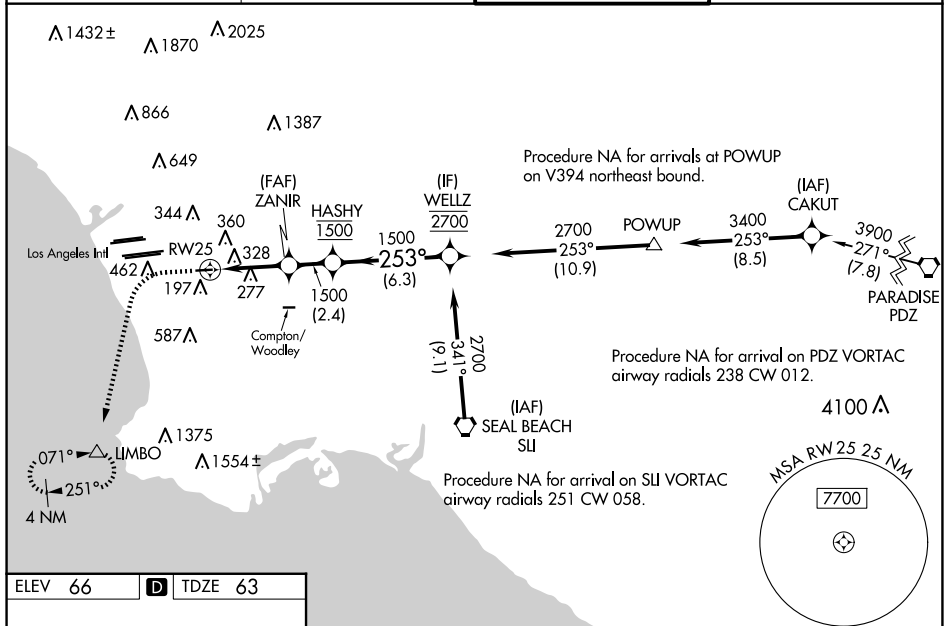
Circling NA north of Rwy 7-25. Rwy 25 helicopter visibility reduction below 1 SM NA. For uncompensated Baro-VNAV systems, LNAV/VNAV NA below 5°C or above 54°C. Inop table does not apply. Simultaneous approach authorized. LNAV procedure NA during simultaneous operations. Use of FD or AP required during simultaneous operations. Circling Rwy 7 NA at night.

ODALS



**MISSED APPROACH:** Climb to 800 then climbing left turn to 3000 direct LIMBO and hold, continue climb-in-hold to 3000.

ATIS <b>118.4</b>	SOCAL APP CON <b>124.9 269.0</b>	HAWTHORNE TOWER ★ <b>121.1(CTAF) 0 257.8</b>	GND CON <b>125.1</b>
----------------------	-------------------------------------	-------------------------------------------------	-------------------------



ELEV 66	<b>D</b>	TDZE 63
---------	----------	---------

