

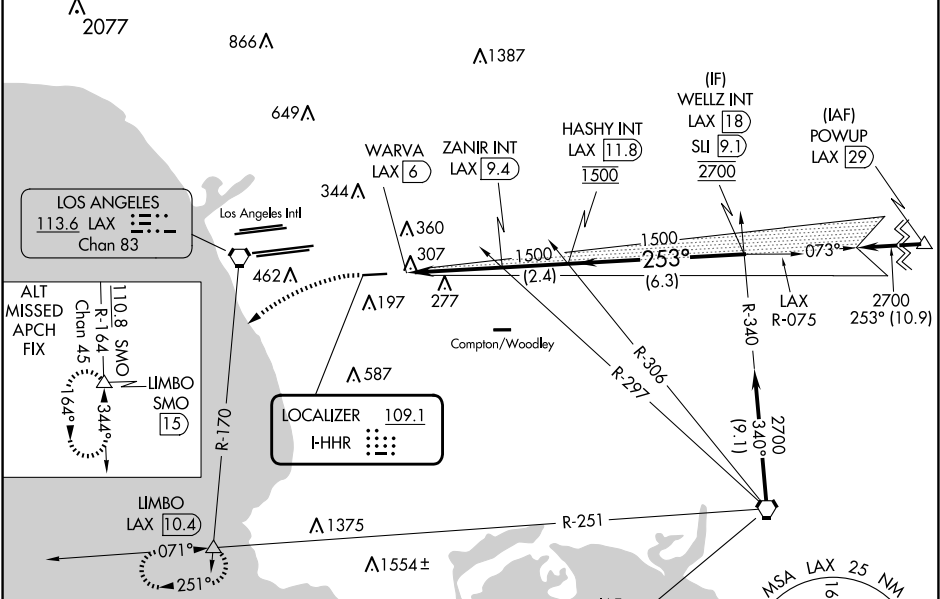
LOC I-HHR	APP CRS	Rwy Idg	4194	LOC RWY 25 JACK NORTHROP FLD/HAWTHORNE MUNI (HHR)
109.1	253°	TDZE	63	
		Apt Elev	66	

⚠ Inop table does not apply. Rwy 25 helicopter visibility reduction below 1 SM NA. Circling Rwy 7 NA at night. When local altimeter setting not received, use Los Angeles Intl altimeter setting. Simultaneous approach authorized with LAX 25L/R 24L/R. Circling NA north of Rwy 7-25. DME from LAX VORTAC. Simultaneous reception of I-HHR and LAX DME required.

ODALS

MISSED APPROACH: Climbing left turn to 3000 on heading 210° and LAX VORTAC R-170 to LIMBO INT/LAX 10.4 DME and hold.

ATIS	SOCAL APP CON	HAWTHORNE TOWER ★	GND CON
118.4	124.9 269.0	121.1(CTAF) 0 257.8	125.1



ELEV 66

TDZE 63

LOS ANGELES 113.6 LAX Chan 83

ALT MISSED APCH FIX

110.8 SMO

Chan 45

R-64

344°

344°

164°

15

LIMBO SMO

LIMBO LAX 10.4

071°

251°

LOCALIZER 109.1 I-HHR

LA 1375

LA 1554±

SEAL BEACH 115.7 SLI Chan 104

Procedure NA for arrivals at SLI VORTAC on V459-597 southeast bound.

MSA LAX 25 NM

5300

7700

2700

050°

165°

TWR 135 4884 X 100

253°

hdg 210°

3000

LAX R-170

LIMBO

VGSI and descent angles not coincident (VGSI Angle 3.50/TCH 26).

LOC unusable from MAP inbound.

WARVA LAX 6

3.10 TCH 45

ZANIR INT LAX 9.4

HASHY INT LAX 11.8

WELLY INT LAX 18

2700

253°

0.8 NM

3.4 NM

2.4 NM

6.3 NM

CATEGORY	A	B	C	D
S-25	580-1	517 (600-1)	580-1 ³ / ₈	517 (600-1 ³ / ₈)
CIRCLING	620-1	554 (600-1)	780-2	780-2 ¹ / ₄
			714 (800-2)	714 (800-2 ¹ / ₄)