

VOR HGR <u>109.8</u>	APP CRS 091°	Rwy Idg TDZE Apt Elev	7000 695 703
--------------------------------	------------------------	-----------------------------	---

VOR RWY 9

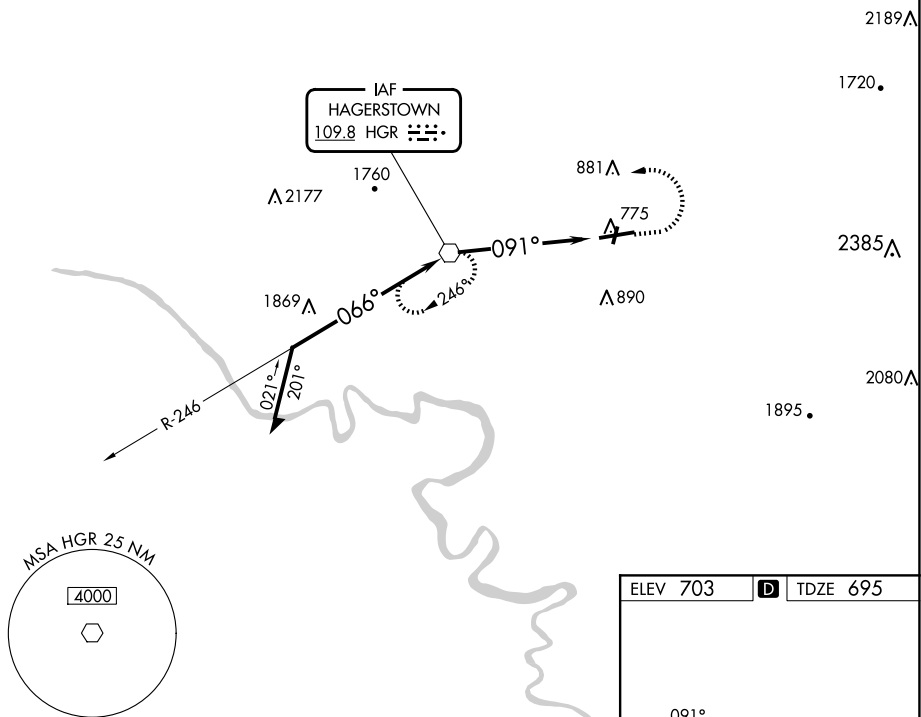
HAGERSTOWN RGNL/RICHARD A HENSON FLD (HGR)

TA

Circling Rwy 20 NA at night.

MISSED APPROACH: Climb to 1300 then climbing left turn to 3600 direct HGR VOR and hold, continue climb-in-hold to 3600.

ASOS 126.375	POTOMAC APP CON 126.825 239.025	HAGERSTOWN TOWER ★ 120.3 (CTAF) 0 225.4	GND CON 120.8	UNICOM 122.95
-----------------	------------------------------------	--	------------------	------------------



ELEV 703 TDZE 695

091°

TWR 779

0.3% UP

0.3% UP

7000 X 150

2

100

27

REIL Rwy 2 and 20

REIL Rwy 9

MIRL Rwy 2-20

HIRL Rwy 9-27

FAF to MAP 5.5 NM

Knots	60	90	120	150	180
Min:Sec	5:30	3:40	2:45	2:12	1:50

Diagram illustrating a circling approach for a Category C aircraft. The diagram shows a 3600m initial altitude, a 246° climb, a 066° descent to 2500m, and a 091° final approach. A 5.5 NM distance is marked. A table below defines the circling approach categories and altitudes.

CATEGORY	A	B	C	D
S-9	1080-1	385 (400-1)	1080-1½	385 (400-1½)
C CIRCLING	1160-1	457 (500-1)	1200-1½ 497 (500-1½)	1320-2 617 (700-2)