

APP CRS  
095°

Rwy Idg  
TDZE  
Apt Elev

3752  
603  
604

RNAV (GPS) RWY 9

GRAND HAVEN MEML AIRPARK (3GM)

RNP APCH.

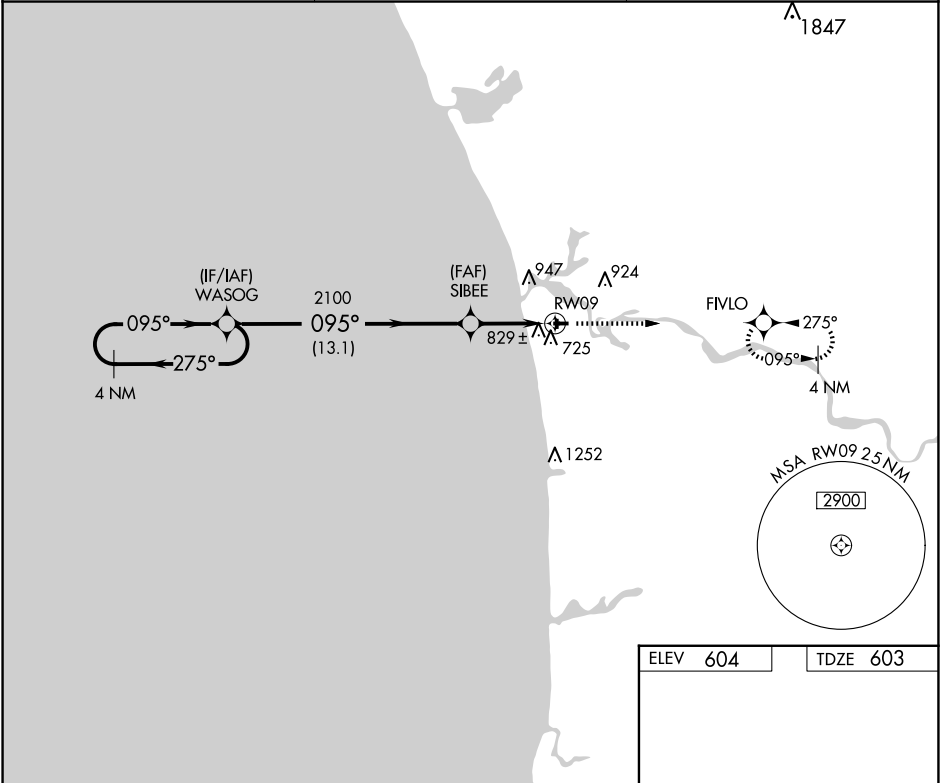
▼

▲ NA

Use Muskegon altimeter setting. Circling Rwy 18, 36 NA at night.  
Rwy 9 helicopter visibility reduction below ¾ SM NA.

MISSED APPROACH: Climb to 2700 direct FIVLO and hold.

MKG ASOS 124.3	GREAT LAKES APP CON★ 133.825 290.35	UNICOM 122.7 (CTAF) 0
-------------------	--	--------------------------



4 NM Holding Pattern

WASOG

3000

←275°

095°→

095°

SIBEE

2100

3.04°

TCH 35

13.1 NM

4.5 NM

RWY09

2700

FIVLO

CATEGORY	A	B	C	D
LNAV MDA	1140-1	537 (600-1)	1140-1½ 537 (600-1½)	NA
CIRCLING	1240-1	636 (700-1)	1320-2 716 (800-2)	NA

ELEV 604

TDZE 603

81

2058 X 40

0.3% UP

3752 X 75

0.3% UP

27

095°

36

REIL Rwy 9 and 27 0

MIRL Rwy 9-27 and 18-36 0