

WAAS	APP CRS	Rwy Idg	10702
CH 65817	334°	TDZE	17
W33A		Apt Elev	17

RNAV (GPS) RWY 33

CHENNAULT INTL (CWF')

RNP APCH - GPS.

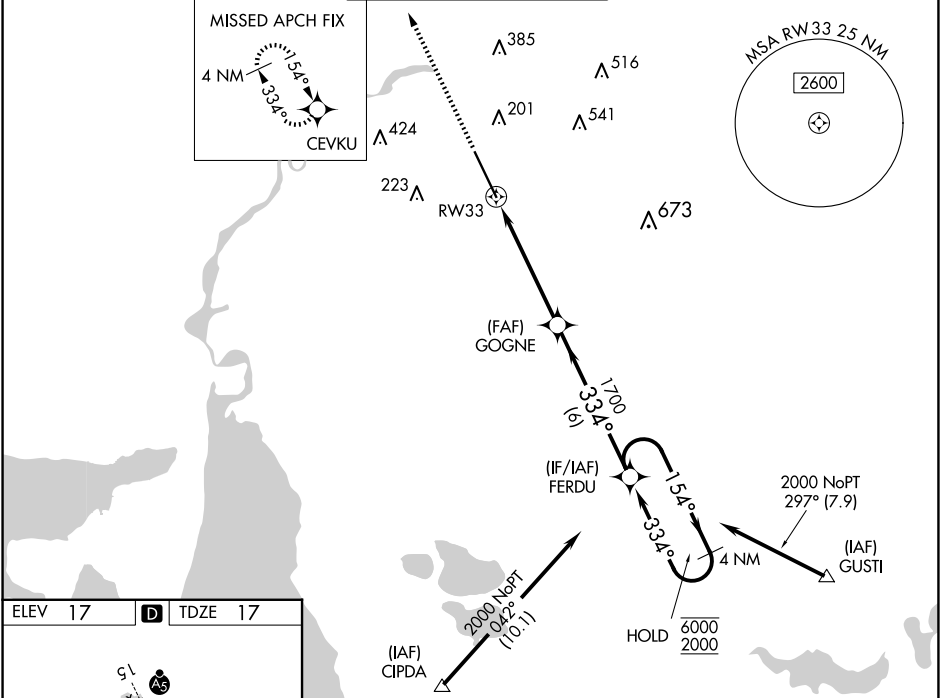
▼

ASR

Baro-VNAV and VDP NA when using Lake Charles Rgnl altimeter setting.  
For uncompensated Baro-VNAV systems, LNAV/VNAV NA below -15°C or above 54°C.  
When local altimeter setting not received, use Lake Charles Rgnl altimeter setting and increase LPV DA to 233 feet; increase LNAV/VNAV DA to 510 feet and all visibilities ½ SM.  
Increase all MDAs 20 feet and LNAV visibility Cat C/D ½ SM.

MISSED APPROACH: Climb to 2000 direct CEVKU and hold.

ATIS	LAKE CHARLES APP CON ★	CHENNAULT TOWER ★	GND CON	UNICOM
120.0	119.8 282.3	124.2 (CTAF) 0 290.4	121.65 275.8	122.95



ELEV 17 D TDZE 17

REIL Rwy 33 0  
HIRL Rwy 15-33 0

2000	CEVKU	GOGNE	FERDU	4 NM Holding Pattern
1.6 NM to RW33	1700	1700	1540	6000 2000
1.6	3.5 NM	6 NM		
CATEGORY	A	B	C	D
LPV DA	217-3/4 200 (200-3/4)			
LNAV/VNAV DA	494-13/4 477 (500-13/4)			
LNAV MDA	580-1	563 (600-1)	580-15/8	563 (600-15/8)
CIRCLING	640-1	623 (700-1)	640-13/4 723 (700-13/4)	740-21/4 723 (800-21/4)

SC-4, 10 JUL 2025 to 07 AUG 2025

SC-4, 10 JUL 2025 to 07 AUG 2025