

WAAS CH <b>69204</b> <b>W33A</b>	APP CRS <b>336°</b>	Rwy Idg <b>5950</b> TDZE <b>4316</b> Apt Elev <b>4317</b>
--	------------------------	---

RNAV (GPS) RWY 33

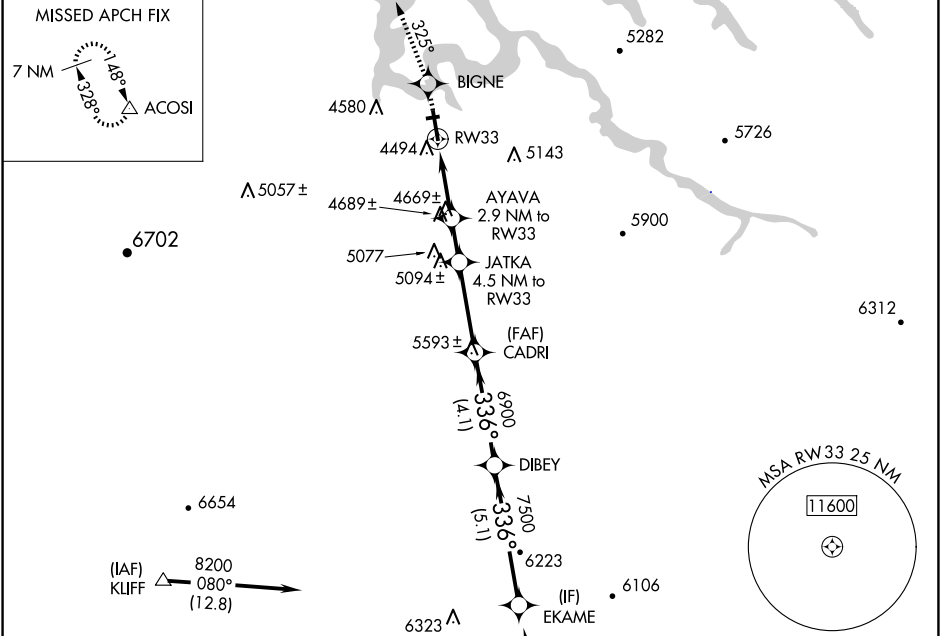
PAGE MUNI (PGA)

▼

For uncompensated Baro-VNAV systems, LNAV/VNAV NA below -23°C (-9°F) or above 41°C (105°F).  
DME/DME RNP-0.3 NA. Circling NA to Rwy 7-25.

MISSED APPROACH: Climb to 8500 direct BIGNE and via 325° track to ACOSI and hold, continue climb-in-hold to 8500.

ASOS <b>120.625</b>	DENVER CENTER <b>127.55 256.875</b>	UNICOM <b>122.8 (CTAF) 0</b>
------------------------	--	---------------------------------



ELEV 4317	<b>D</b> TDZE 4316
-----------	--------------------

Procedure NA for arrivals at CELAY via V208 southbound.

8500

BIGNE

325° tr

ACOSI

VGSI and RNAV glidepath not coincident (VGSI Angle 3.00/TCH 30).

EKAME

\*LNAV only.

AYAVA 2.9 NM to RW33

JATKA 4.5 NM to RW33

CADRI

DIBEY

8200

Procedure Turn NA

GP 3.00° TCH 50

1.8 NM

1.1 NM

1.6 NM

3.3 NM

4.1 NM

5.1 NM

5280

5800

6900

7500

CATEGORY	A	B	C	D
LPV DA	4566-1 250 (300-1)			
LNAV/VNAV DA	4744-1½ 428 (500-1½)			
LNAV MDA	4920-1 604 (700-1)	4920-1¾ 604 (700-1¾)	4920-2 604 (700-2)	
CIRCLING	4920-1 603 (700-1)	5080-2¼ 763 (800-2¼)	5360-3 1043 (1100-3)	

REIL Rwy 15 and 33 0

MIRL Rwy 15-33 0

336° to RW33