

WAAS CH <b>49232</b> <b>W02A</b>	APP CRS <b>017°</b>	Rwy Idg TDZE Apt Elev	<b>6000</b> <b>444</b> <b>444</b>
--	------------------------	-----------------------------	---

RNAV (GPS) RWY 2

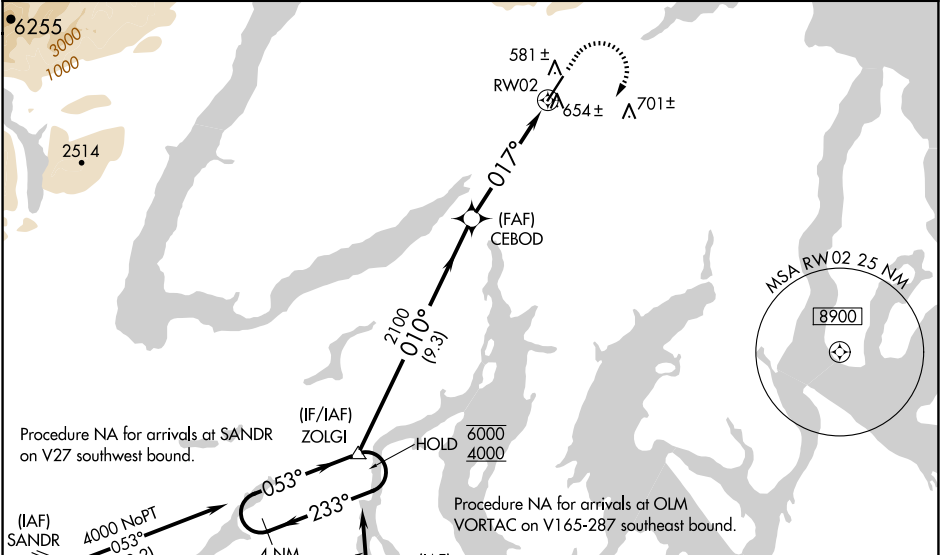
BREMERTON NTL (PWT)

RNP APCH - GPS.

Circling NA for Cats C and D west of Rwy 2-20.  
Rwy 2 helicopter visibility reduction below  $\frac{3}{4}$  SM NA.  
For uncompensated BARO-VNAV systems, LNAV/VNAV NA below -15°C above 54°C.

MISSED APPROACH: Climb to 1200 then climbing right turn to 4000 direct ZOLGI and hold, continue climb-in-hold to 4000.

AWOS-3PT <b>121.2</b>	SEATTLE APP CON <b>120.1 254.4 269.125</b>	CLNC DEL <b>127.1</b>	UNICOM <b>123.05 (CTAF)</b>
--------------------------	---	--------------------------	--------------------------------



ELEV	444	TDZE	444
------	-----	------	-----

4 NM Holding Pattern

VGSI and RNAV glidepath not coincident (VGSI Angle 3.00/TCH 43).

ZOLGI

6000 4000 053° 233° 010°

GP 3.00° TCH 56

CEBOD 2100 017°

\* LNAV only

\* 2.1 NM to RW02

RW02

9.3 NM 2.9 NM 2.1 NM

CATEGORY	A	B	C	D
LPV DA	772-1 328 (400-1)			
LNAV/VNAV DA	913-1½ 469 (500-1½)			
LNAV MDA	1160-1	716 (800-1)	1160-2	716 (800-2)
CIRCLING	1160-1	716 (800-1)	1160-2 716 (800-2)	1240-2½ 796 (800-2½)

REIL Rwy 2

HIRL Rwy 2-20