

LOC I-PWT	APP CRS	Rwy Idg	6000
111.1	197°	TDZE	442
		Apt Elev	444

ILS or LOC RWY 20

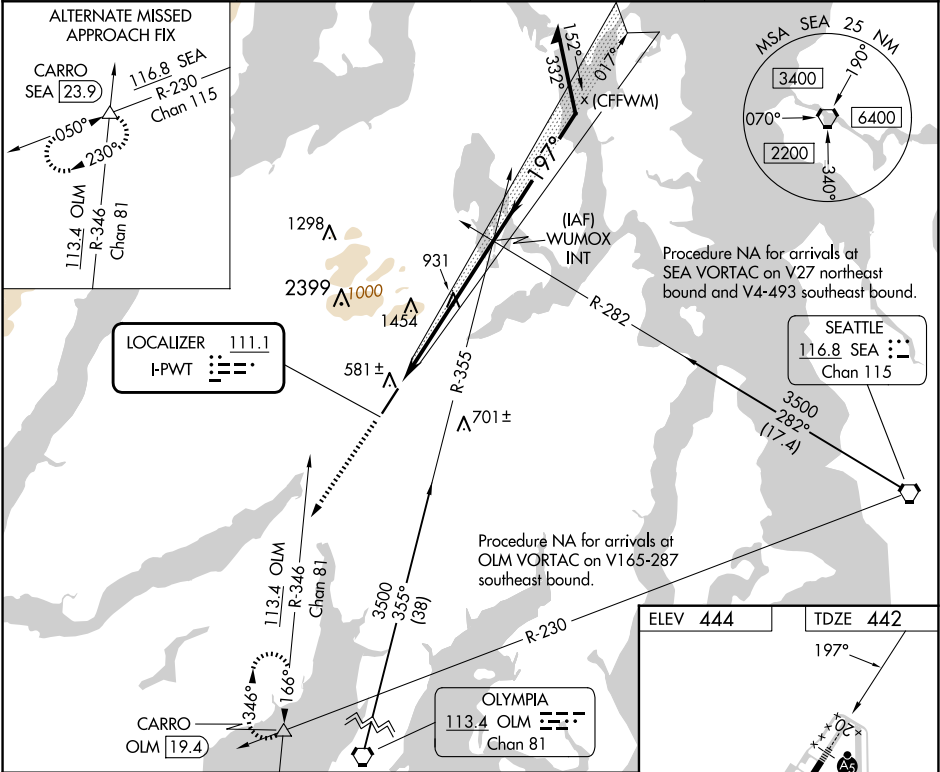
BREMERTON NTL (PWT)

⚠ Circling NA for Cats C and D west of Rwy 2-20. When local altimeter setting not received, use Seattle-Tacoma Intl altimeter setting and increase all DA 45 feet, all MDA 60 feet and increase S-LOC 20 Cat C and D visibility ½ SM, Circling Cat A, C and D visibility ¼ SM. For inop ALS, increase S-LOC 20 Cat C and D visibility to 2 SM. For inop ALS, when using Seattle-Tacoma Intl altimeter setting, increase S-LOC 20 Cat C and D visibility to 2½ SM.

MALSR

MISSED APPROACH: Climb to 4000 on heading 197° and OLM VORTAC R-346 to CARRO INT/OLM 19.4 DME and hold, continue climb-in-hold to 4000.

AWOS-3PT	SEATTLE APP CON	CLNC DEL	UNICOM
121.2	120.1 254.4 269.125	127.1	123.05 (CTAF) 0



4000	OLM R-346	CARRO	WUMOX INT	Remain within 10 NM
hdg 197°		△	3500	
			2500	
			3000	
			2500	GS 3.00° TCH 49
			6.3 NM	
CATEGORY	A	B	C	D
S-ILS 20		642-½	200 (200-½)	
S-LOC 20	1200-½ 758 (800-½)	1200-¾ 758 (800-¾)	1200-1¾ 756 (800-2¼)	758 (800-1¾)
CIRCLING	1200-1 756 (800-1)	1200-1¼ 756 (800-1¼)	1200-2¼ 756 (800-2¼)	1240-2½ 796 (800-2½)

