

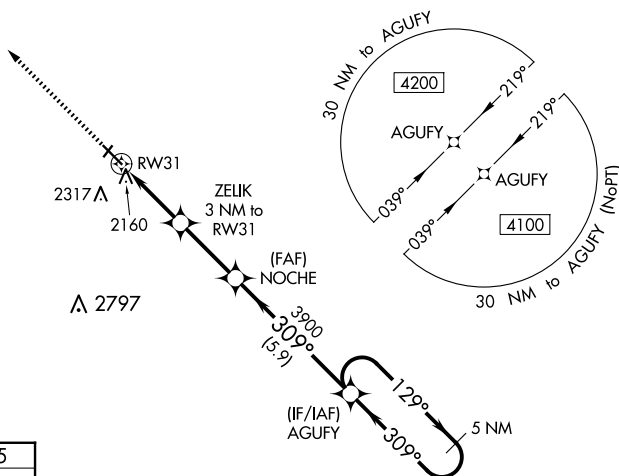
WAAS CH 97612 W31A	APP CRS 309°	Rwy Idg 5500 TDZE 2025 Apt Elev 2032
--	------------------------	---

RNAV (GPS) RWY 31
WINNER RGNL (ICR)

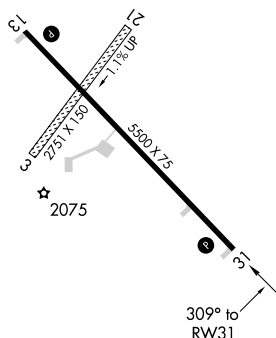
⚠ Circling NA to Rwy 3 and 21. For uncompensated Baro-VNAV systems, LNAV/VNAV NA below -24° C (-11°F) or above 54°C (130°F). DME/DME RNP-0.3 NA. Baro-VNAV and VDP NA when using Valentine altimeter setting. When local altimeter setting not received, use Valentine, NE altimeter setting and increase LPV DA to 2514, LNAV/VNAV DA to 2549 and all visibilities $\frac{7}{8}$ mile, increase all MDA 240 feet; increase Cat B visibility $\frac{1}{4}$ mile and Cat C 1 mile.

MISSED APPROACH:
Climb to 4100 direct
DAFHY and hold.

ASOS 126.775	MINNEAPOLIS CENTER 125.1 269.1	GCO 121.725	UNICOM 122.8 (CTAF) ①
------------------------	--	-----------------------	---------------------------------



ELEV 2032		TDZE 2025
-----------	--	-----------

MIRL Rwy 13-31 **L**