

WAAS  
CH **61212**  
**W13A**

APP CRS  
**129°**

Rwy Idg  
TDZE  
Apt Elev  
**5500**  
**2020**  
**2032**

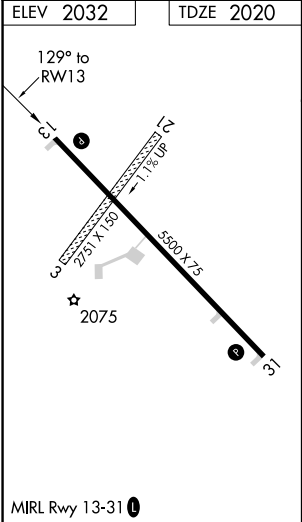
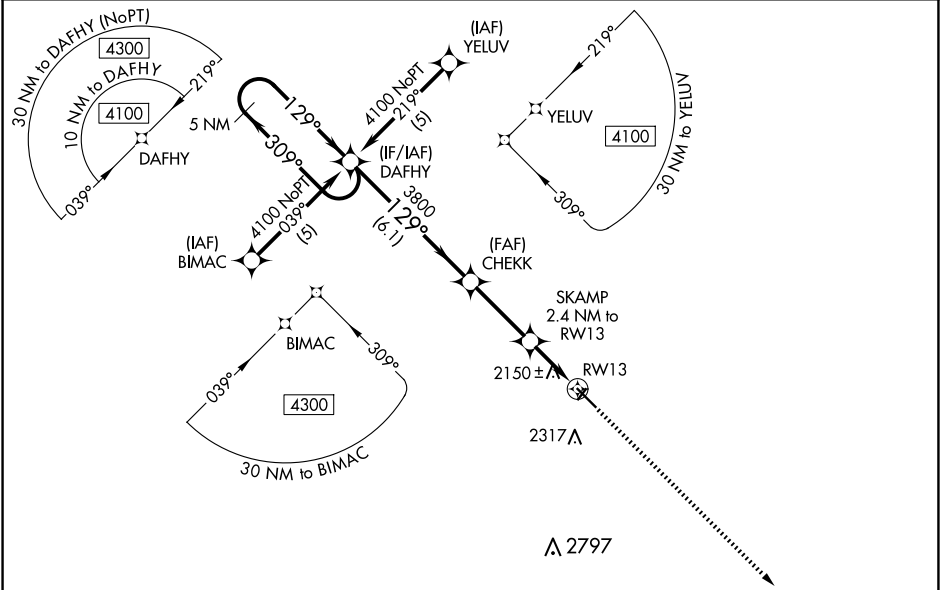
**RNAV (GPS) RWY 13**

WINNER RGNL (ICR)

**⚠** DME/DME RNP-0.3 NA. For uncompensated Baro-VNAV systems, LNAV/VNAV NA below -19°C (-2°F) or above 54°C (130°F). Baro-VNAV and VDP NA when using Valentine altimeter setting. When local altimeter setting not received, use Valentine, NE altimeter setting and increase all DA/MDA 240 feet; increase LPV all Cats visibility ¾ mile, LNAV/VNAV all Cats visibility 1 mile, LNAV Cat C visibility ¾ mile, Circling Cat B visibility ¾ mile and Cat C visibility 1 mile. Circling NA to Rwy's 3 and 21.

MISSED APPROACH: Climb to 4100 direct AGUFY and hold.

ASOS <b>126.775</b>	MINNEAPOLIS CENTER <b>125.1 269.1</b>	GCO <b>121.725</b>	UNICOM <b>122.8 (CTAF) 0</b>
------------------------	--	-----------------------	---------------------------------



VGSi and RNAV glidepath not coincident (VGSi Angle 3.00/TCH 38).				4100	AGUFY
5 NM Holding Pattern				DAFHY	CHEKK
4100 ← 309° → 129° → 3800				SKAMP 2.4 NM to RW13	*LNNAV only
GP 3.00° TCH 38				*2800	*1.4 NM to RW13
				6.1 NM	3 NM
CATEGORY	A	B	C	D	
LPV DA	2270-1 250 (300-1)			NA	
LNNAV/VNAV DA	2456-1½ 436 (500-1½)			NA	
LNNAV MDA	2480-1	460 (500-1)	2480-1¼ 460 (500-1¼)	NA	
CIRCLING	2580-1 548 (600-1)	2680-1 648 (700-1)	2680-1¾ 648 (700-1¾)	NA	