

LOC I-DPA

109.5

APP CRS

097°

Rwy Ldg

4750

TDZE

756

Apt Elev

759

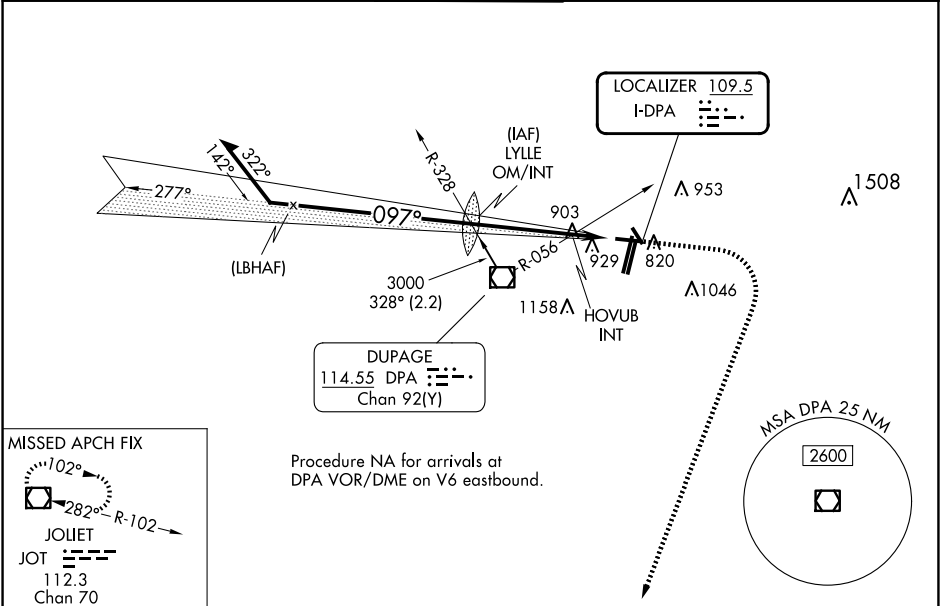
ILS or LOC RWY 10

DUPAGE (DPA)

When local altimeter setting not received, use Chicago/Aurora altimeter setting: increase S-ILS 10 DA to 993 feet; increase all MDA 40 feet and visibility S-LOC 10 Cats C/D and HOVUB INT minimums S-LOC 10 Cats C/D ½ SM, and Circling and HOVUB INT minimums Circling Cats C/D ¼ SM. Circling Rwy 15, 28, 33 NA at night.

MISSED APPROACH: Climb to 1200 then climbing right turn to 2600 direct JOT VOR/DME and hold.

ATIS 132.075	CHICAGO APP CON 133.5 349.0	DUPAGE TOWER 120.9 257.8	GND CON 121.8	CLNC DEL 119.75
-----------------	--------------------------------	-----------------------------	------------------	--------------------



<div>Remain within 10 NM</div> <div>3000</div> <div>277°</div> <div>097°</div> <div>2501</div> <div>2600</div> <div>GS 3.00° TCH 50</div> <div>1200</div> <div>2600</div> <div>JOT</div> <div>* LOC only. * 1340 when using Chicago/ Aurora altimeter setting.</div> <div>HOVUB INT</div> <div>*1300</div> <div>3.6 NM</div> <div>1.7 NM</div>					ELEV 759		TDZE 756									
					<div>097°</div> <div><div>4750 X 75</div><div>20R</div><div>20L</div><div>2L</div><div>2R</div><div>AS</div><div>TWR 895</div><div>369 X 100</div><div>441 X 100</div><div>2571 X 150</div><div>6451 X 100</div></div>											
CATEGORY					A		B		C		D					
S-ILS 10							956-¾		200 (200-¾)							
S-LOC 10					1300-1		544 (600-1)		1300-1½		544 (600-1½)					
CIRCLING					1300-1 541 (600-1)		1360-1 601 (700-1)		1460-2 701 (800-2)		1460-2¼ 701 (800-2¼)					
HOVUB INT MINIMUMS (DUAL VOR RECEIVERS REQUIRED)																
S-LOC 10					1220-1		464 (500-1)		1220-1¾		464 (500-1¾)					
CIRCLING					1260-1 501 (600-1)		1360-1 601 (700-1)		1460-2 701 (800-2)		1460-2¼ 701 (800-2¼)					
					FAF to MAP 5.3 NM											
					Knots		60		90		120		150		180	
					Min:Sec		5:18		3:32		2:39		2:07		1:46	