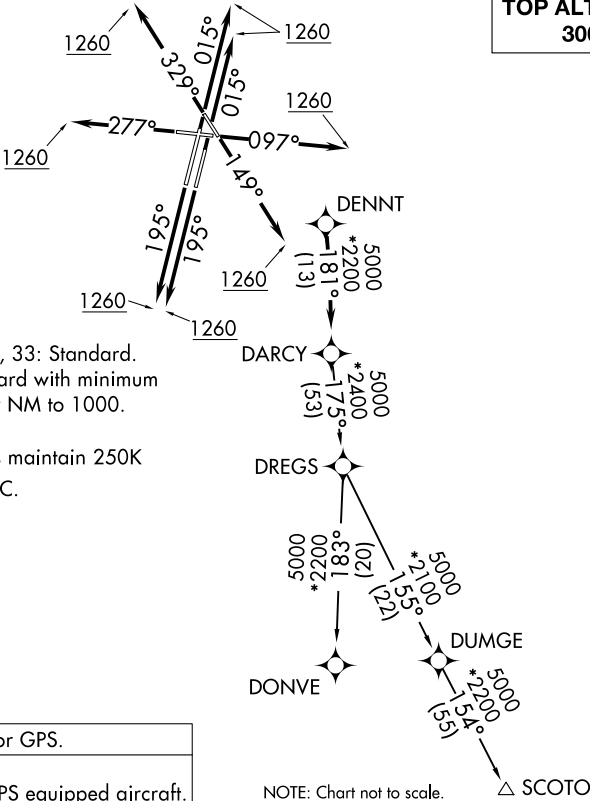


CHICAGO DEP CON
133.5 349.0
ATIS
132.075
GND CON
121.8
DUPAGE TOWER
120.9 257.8

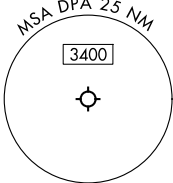
TOP ALTITUDE:
3000



TAKEOFF MINIMUMS:

Rwys 2L/R, 10, 20L/R, 28, 33: Standard.
Rwy 15: 300-1⅓ or standard with minimum
climb of 205' per NM to 1000.

NOTE: Turbojet departures maintain 250K
until advised by ATC.



- RNAV 1 - DME/DME/IRU or GPS.
- RADAR required.
- RADAR required for non-GPS equipped aircraft.

NOTE: Chart not to scale.

DEPARTURE ROUTE DESCRIPTION

TAKEOFF RUNWAYS 2L/R: Climb on heading 015° to 1260, then as assigned by ATC, for vectors to DENNT, thence

TAKEOFF RUNWAY 10: Climb on heading 097° to 1260, then as assigned by ATC, for vectors to DENNT, thence

TAKEOFF RUNWAY 15: Climb on heading 149° to 1260, then as assigned by ATC, for vectors to DENNT, thence

TAKEOFF RUNWAYS 20L/R: Climb on heading 195° to 1260, then as assigned by ATC, for vectors to DENNT, thence

TAKEOFF RUNWAY 28: Climb on heading 277° to 1260, then as assigned by ATC, for vectors to DENNT, thence

TAKEOFF RUNWAY 33: Climb on heading 329° to 1260, then as assigned by ATC, for vectors to DENNT, thence

. . . . on track 181° to DARC, then on (transition), maintain 3000.
Expect filed altitude 10 minutes after departure.

DONVE TRANSITION (DARCY7.DONVE):
SCOTO TRANSITION (DARCY7.SCOTO):

EC-3, 10 JUL 2025 to 07 AUG 2025

EC-3, 10 JUL 2025 to 07 AUG 2025