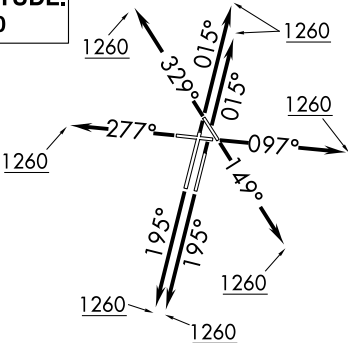


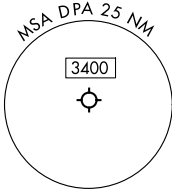
CHICAGO DEP CON  
133.5 349.0  
ATIS  
132.075  
GND CON  
121.8  
DUPAGE TOWER  
120.9 257.8

TOP ALTITUDE:  
3000



TAKEOFF MINIMUMS:  
Rwys 2L/R, 10, 20L/R, 28, 33: Standard.  
Rwy 15: 300-1% or standard with minimum climb  
of 205' per NM to 1000.

NOTE: Turbojet departures maintain 250K  
until advised by ATC.  
NOTE: ROBERTS TRANSITION: For aircraft inbound  
to CMI or STL, or as assigned by ATC.

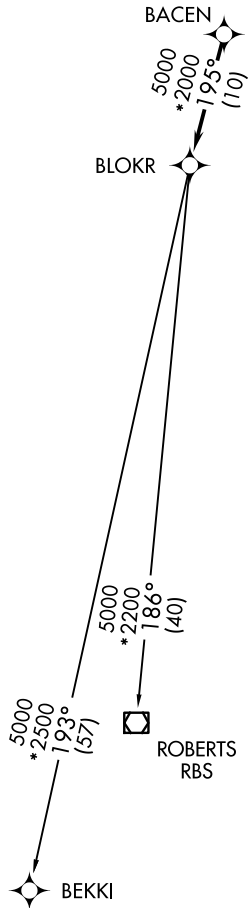


RNAV 1 - DME/DME/IRU or GPS.  
RADAR required. RADAR required for  
non-GPS equipped aircraft.

DEPARTURE ROUTE DESCRIPTION

TAKEOFF RUNWAYS 2L/R: Climb on heading 015° to 1260,  
then as assigned by ATC, for vectors to BACEN, thence. . . .  
TAKEOFF RUNWAY 10: Climb on heading 097° to 1260, then  
as assigned by ATC, for vectors to BACEN, thence. . . .  
TAKEOFF RUNWAY 15: Climb on heading 149° to 1260, then  
as assigned by ATC, for vectors to BACEN, thence. . . .  
TAKEOFF RUNWAYS 20L/R: Climb on heading 195° to 1260,  
then as assigned by ATC, for vectors to BACEN, thence. . . .  
TAKEOFF RUNWAY 28: Climb on heading 277° to 1260, then  
as assigned by ATC, for vectors to BACEN, thence. . . .  
TAKEOFF RUNWAY 33: Climb on heading 329° to 1260, then  
as assigned by ATC, for vectors to BACEN, thence. . . .  
...on track 195° to BLOKR, then on (transition). Maintain 3000.  
Expect filed altitude 10 minutes after departure.

BEKKI TRANSITION (BLOKR7.BEKKI):  
ROBERTS TRANSITION (BLOKR7.RBS):



NOTE: Chart not to scale.