

WAAS
CH **72941**
W15A

APP CRS
148°

Rwy Idg
TDZE **712**
Apt Elev **712**

5503

712

712

RNAV (GPS) RWY 15

AURORA MUNI (ARR)

RNP APCH - GPS.

▼

For uncompensated Baro-VNAV systems, LNAV/VNAV NA below -20°C or above 54°C.
Rwy 15 helicopter visibility reduction below ¾ SM NA.

MISSED APPROACH: Climb to 3000 direct UQITY and hold, continue climb-in-hold to 3000.

ATIS
125.85

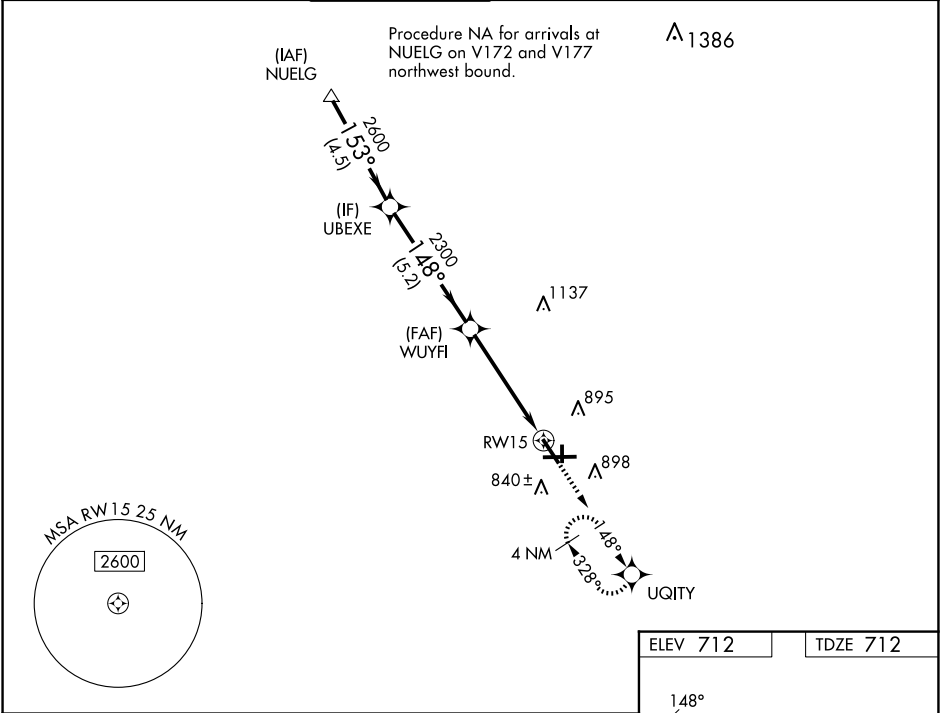
CHICAGO APP CON
133.5 349.0

AURORA TOWER★
120.6 (CTAF) 0

GND CON
121.7

CLNC DEL
121.7
(When tower closed)

UNICOM
122.95 123.5



UBEXE

WUYFI

RWY 15

UQITY

3000

148°

2600

2300

GP 3.00°
TCH 45

VGSI and RNAV glidepath not coincident (VGSI Angle 3.00/TCH 34).

*LNAV only.

*1.6 NM to RWY 15

5.2 NM

3.3 NM

1.6 NM

CATEGORY	A	B	C	D
LPV DA		962-¾	250 (300-¾)	
LNAV/VNAV DA		962-¾	250 (300-¾)	
LNAV MDA	1260-1	548 (600-1)	1260-1½	548 (600-1½)
CIRCLING	1260-1	548 (600-1)	1300-1½ 588 (600-1½)	1320-2 608 (700-2)

ELEV 712

TDZE 712

148°

5503 X 100

3198 X 75

6501 X 100

81

36

775

784

27

45

33

15

18

27

36

HIRL Rwy 15-33 and 9-27
MIRL Rwy 18-36
REIL Rwy 15, 18, 27, and 36