

LOC/DME I-ROF
111.15
Chan **48(Y)**

APP CRS
328°

Rwy Ldg
TDZE **705**
Apt Elev **712**

LOC RWY 33

AURORA MUNI (ARR)

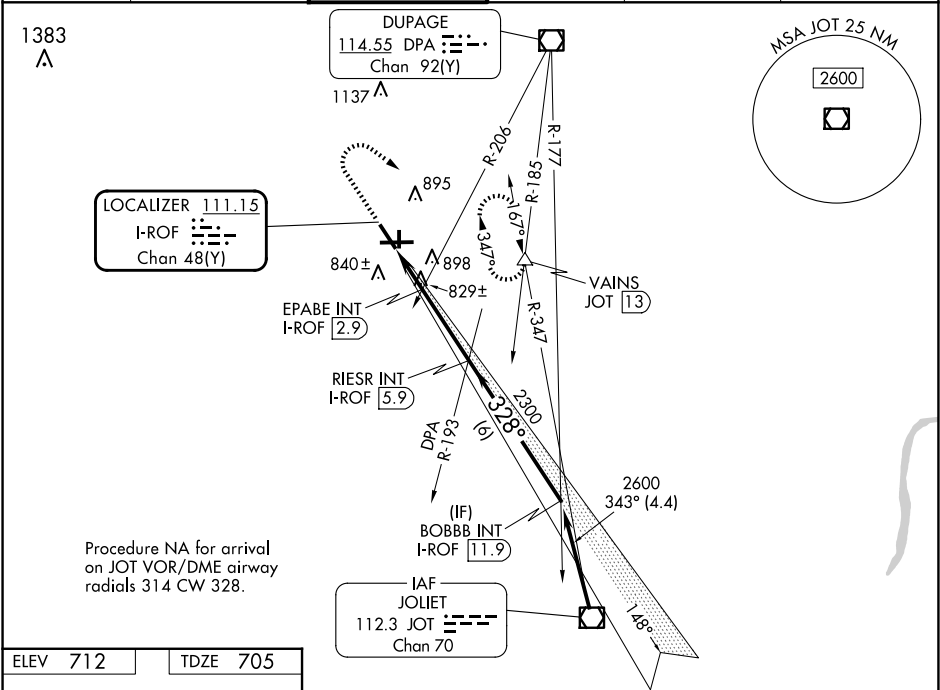
⚠

For inop ALS, increase S-LOC 33 Cats C and D visibility to 1¼ SM and EPABE FIX minimums S-LOC 33 Cats C and D visibility to 1 SM.

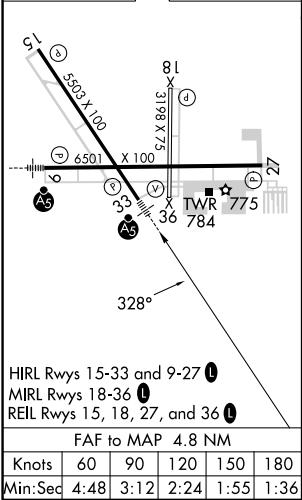
MALSR

MISSED APPROACH: Climb to 1400 then climbing right turn to 3000 on heading 146° and JOT VOR/DME R-347 to VAINS INT/JOT 13 DME and hold, continue climb-in-hold to 3000.

ATIS 125.85	CHICAGO APP CON 133.5 349.0	AURORA TOWER★ 120.6 (CTAF) 0	GND CON 121.7	CINC DEL 121.7 (When tower closed)	UNICOM 122.95 123.5
-----------------------	---------------------------------------	--	-------------------------	---	-------------------------------



ELEV 712	TDZE 705
-----------------	-----------------



1400

↑

3000

hdg
146°

JOT
R-347

VAINS

△

RIESR INT
I-ROF 5.9

BOBBB INT
I-ROF 11.9

EPABE INT
I-ROF 2.9

I-ROF 1.1

I-ROF 2.1

1320

2300

328°

2600

3.04°
TCH 48

1 NM

0.8 NM

3 NM

6 NM

CATEGORY	A		B		C		D	
S-LOC 33	1320-½ 615 (700-½)				1320-⅓ 615 (700-⅓)			
CIRCLING	1320-1 608 (700-1)				1320-⅜ 608 (700-⅜)		1320-2 608 (700-2)	
EPABE FIX MINIMUMS (DUAL VOR RECEIVERS or DME REQUIRED)								
S-LOC 33	1080-½ 375 (400-½)				1080-⅝ 375 (400-⅝)			
CIRCLING	1200-1 488 (500-1)				1300-1½ 588 (600-1½)		1320-2 608 (700-2)	

EC-3, 10 JUL 2025 to 07 AUG 2025

EC-3, 10 JUL 2025 to 07 AUG 2025