
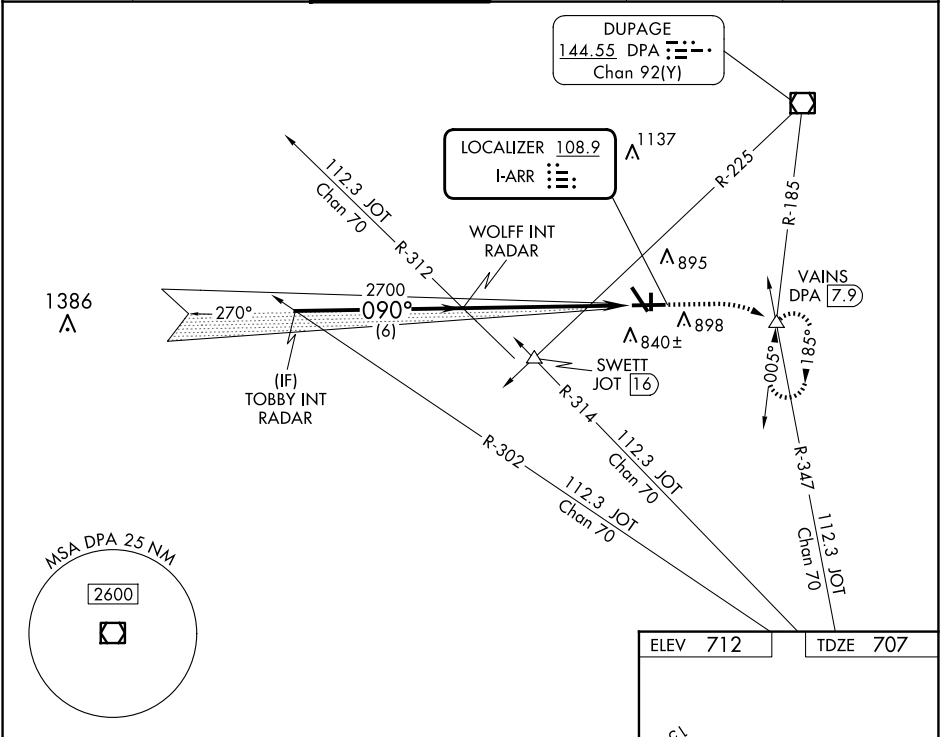


LOC I-ARR 108.9	APP CRS 090°	Rwy Ldg TDZE Apt Elev 6501 707 712
---------------------------	------------------------	--

ILS or LOC RWY 9

AURORA MUNI (ARR)

RADAR required for procedure entry.			MALSR		MISSED APPROACH: Climb to 1200 then climbing right turn to 3000 on heading 090° and on DPA VOR/DME R-185 to VAINS INT/DPA 7.9 DME and hold, continue climb-in-hold to 3000.
▼ For inop ALS, increase S-LOC 9 Cat C/D visibilities to 1½ SM.					
ATIS 125.85	CHICAGO APP CON 133.5 349.0	AURORA TOWER ★ 120.6 (CTAF) 0	GND CON 121.7	CLNC DEL 121.7 (When tower closed)	UNICOM 122.95 123.5



TOBBY INT RADAR		WOLFF INT RADAR		1200 ↑	3000 hdg 090°	DPA R-185	VAINS △
2700		2700					
GS 3.00° TCH 45		2700					
6 NM		6.1 NM					
CATEGORY	A	B	C	D			
S-ILS 9	907-1/2 200 (200-1/2)						
S-LOC 9	1220-1/2 513 (600-1/2)			1220-1 513 (600-1)			
CIRCLING	1220-1 508 (600-1)			1300-1 1/2 588 (600-1 1/2)		1320-2 608 (700-2)	

