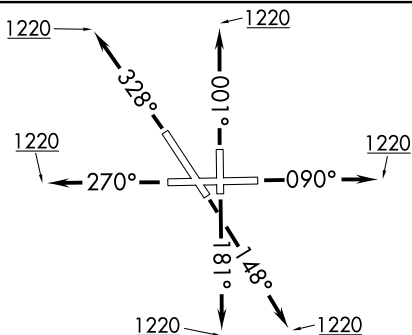
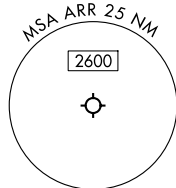


ELANR EIGHT DEPARTURE (RNAV)



**TOP ALTITUDE:**  
3000

CHICAGO DEP CON  
133.5 349.0  
ATIS  
125.85  
GND CON  
121.7  
AURORA TOWER ★  
120.6 (CTAF)



TAKEOFF MINIMUMS:

Rwys 9, 15, 18, 27, 33, 36: Standard.

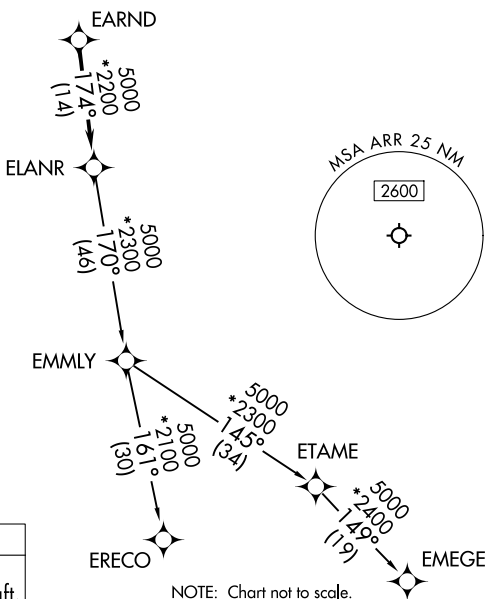
NOTE: Turbojet departures maintain 250K until advised by ATC.

NOTE: EMMLY Transition: For aircraft inbound to Indianapolis Terminal Area, or as assigned by ATC.

RNAV 1 - DME/DME/IRU or GPS.

RADAR required.

RADAR required for non-GPS equipped aircraft.



NOTE: Chart not to scale.



## DEPARTURE ROUTE DESCRIPTION

TAKEOFF RUNWAY 9: Climb on heading 090° to 1 220, then as assigned by ATC, for vectors to EARND, thence. . . .

TAKEOFF RUNWAY 15: Climb on heading 148° to 1220, then as assigned by ATC, for vectors to EARND, thence. . . .

**TAKEOFF RUNWAY 18:** Climb on heading 181° to 1220, then as assigned by ATC, for vectors to EARN, thence. . .

TAKEOFF RUNWAY 27: Climb on heading 270° to 1220, then as assigned by ATC, for vectors to EARND, thence. . . .

TAKEOFF RUNWAY 33: Climb on heading 328° to 1220, then as assigned by ATC, for vectors to EARND, thence. . . .

TAKEOFF RUNWAY 36: Climb on heading 001° to 1220, then as assigned by ATC, for vectors to EARND, thence. . . .

...on track 174° to ELANR, then on (transition), maintain 3000.  
Expect filed altitude 10 minutes after departure.

EMEGE TRANSITION (ELANR8.EMEGE):

EMMLY TRANSITION (ELANR8.EMMLY):

ERECO TRANSITION (ELANR8.ERECO):

ELANR EIGHT DEPARTURE (RNAV)

(ELANR8.ELANR) 17APR25

CHICAGO/AURORA, ILLINOIS  
AURORA MUNI (ARR)