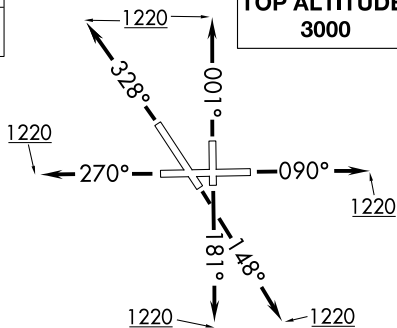


## BLOKR SEVEN DEPARTURE (RNAV)

CHICAGO DEP CON  
133.5 349.0  
ATIS  
125.85  
GND CON  
121.7  
AURORA TOWER ★  
120.6 (CTAF)

RNAV 1 - DME/DME/IRU or GPS.  
RADAR required. RADAR required for non-GPS equipped aircraft.

**TOP ALTITUDE:**  
3000

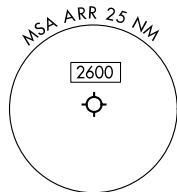


TAKEOFF MINIMUMS:

Rwys 9, 15, 18, 27, 33, 36: Standard.

NOTE: Turbojet departures maintain 250K until advised by ATC.

NOTE: ROBERTS Transition: For aircraft inbound to CMI or STL, or as assigned by ATC.



## DEPARTURE ROUTE DESCRIPTION

**TAKEOFF RUNWAY 9:** Climb on heading 090° to 1220, then as assigned by ATC, for vectors to BACEN, thence. . .

**TAKEOFF RUNWAY 15:** Climb on heading 148° to 1220, then as assigned by ATC, for vectors to BACEN, thence. . .

**TAKEOFF RUNWAY 18:** Climb on heading 181° to 1220, then as assigned by ATC, for vectors to BACEN, thence. . .

**TAKEOFF RUNWAY 27:** Climb on heading 270° to 1220, then as assigned by ATC, for vectors to BACEN, thence. . .

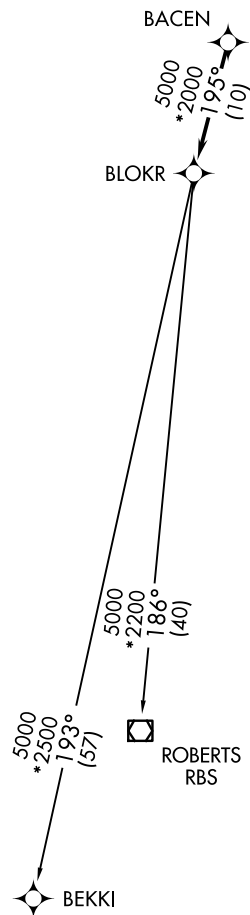
**TAKEOFF RUNWAY 33:** Climb on heading 328° to 1220, then as assigned by ATC, for vectors to BACEN, thence. . .

**TAKEOFF RUNWAY 36:** Climb on heading 001° to 1220, then as assigned by ATC, for vectors to BACEN, thence. . .

...on track 195° to BLOKR, then on (transition). Maintain 3000. Expect filed altitude 10 minutes after departure.

BEKKI TRANSITION (BLOKR7.BEKKI):

### ROBERTS TRANSITION (BLOKR7.RBS):



NOTE: Chart not to scale.

## BLOKR SEVEN DEPARTURE (RNAV)

(BLOKR7.BLOKR) 31OCT24

CHICAGO/AURORA, ILLINOIS  
AURORA MUNI (ARR)