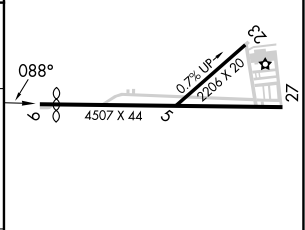
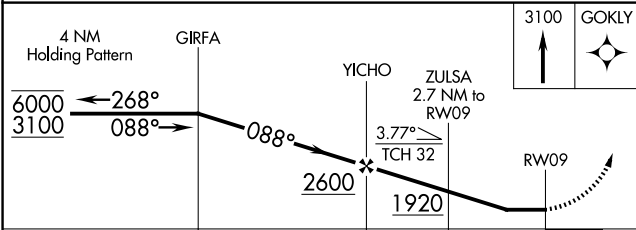
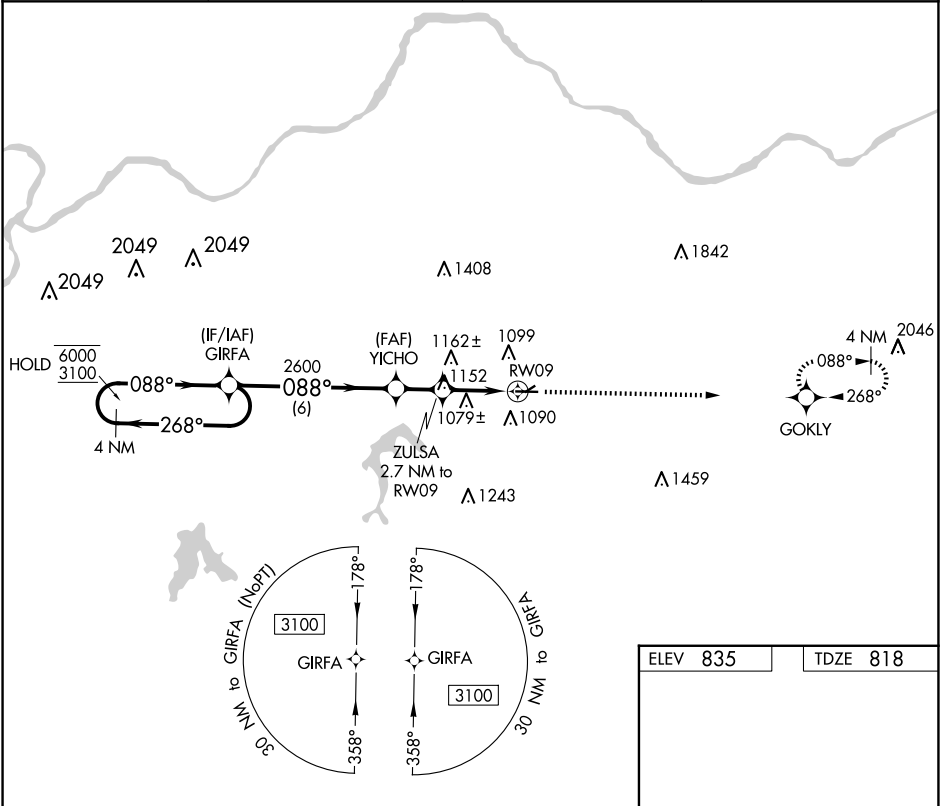


APP CRS	Rwy Idg	4204
088°	TDZE	818
	Apt Elev	835

RNAV (GPS) RWY 9
EAST KANSAS CITY (3GV)

RNP APCH - GPS.	MISSED APPROACH: Climb to 3100 direct GOKLY and hold.
Procedure NA at night. Rwy 9 helicopter visibility reduction below 1 SM NA. Use Kansas City Downtown/Wheeler Fld altimeter setting.	

MKC ASOS 120.75	KANSAS CITY APP CON 118.4 307.35	CINC DEL 121.3	UNICOM 122.8 (CTAF) 0
---------------------------	--	--------------------------	---------------------------------



CATEGORY	A	B	C	D
LNAV MDA	1400-1	582 (600-1)	NA	NA
CIRCLING	1460-1	625 (700-1)	NA	NA

REIL Rwy 9 0
MIRL Rwy 9-27 0

NC-3, 10 JUL 2025 to 07 AUG 2025

NC-3, 10 JUL 2025 to 07 AUG 2025