

(PRIVO.WAYNZ1) 24081

AL-5100 (FAA)

WASHINGTON DULLES INTL (IAD)
WASHINGTON, DC

WAYNZ ONE ARRIVAL (RNAV)

POTOMAC APP CON
120.45 306.925 (241°-330°)
128.525 306.925 (091°-240°)
126.1 338.25 (331°-090°)
D-ATIS
134.85

RNAV 1 - DME/DME/IRU or GPS.

RADAR required.

NOTE: Jet aircraft only.
NOTE: Maintain last assigned altitude until
"Cleared to descend via WAYNZ1 STAR".

NOTE: Chart not to scale.

ARRIVAL ROUTE DESCRIPTION

PHILPSBURG TRANSITION (PSB.WAYNZ1)

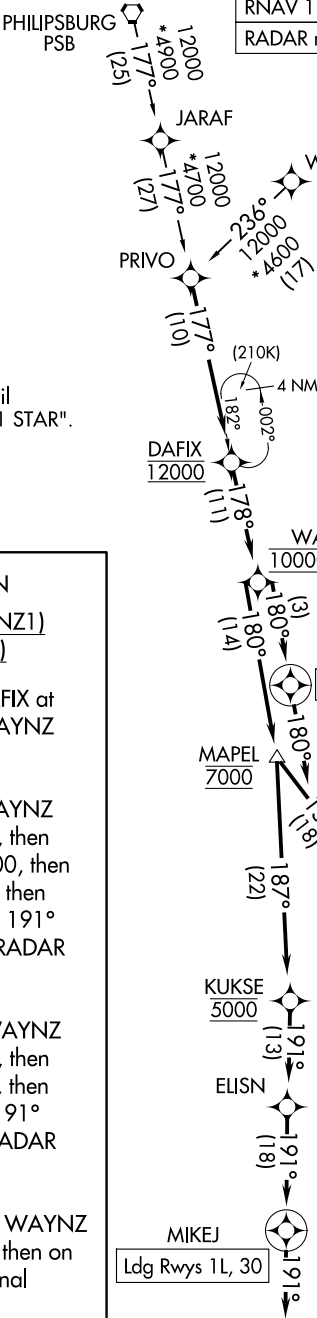
WILSS TRANSITION (WILSS.WAYNZ1)

From PRIVO on track 177° to cross DAFIX at 12000, then on track 178° to cross WAYNZ at 10000 and at 250K.

LANDING RUNWAYS 1C/R: From WAYNZ on track 180° to cross MAPEL at 7000, then on track 153° to cross MOWAT at 5000, then on track 189° to cross HUSEL at 4000, then on track 190° to YACKK, then on track 191° to TICON, then on track 191°. Expect RADAR vectors to final approach course.

LANDING RUNWAYS 1L, 30: From WAYNZ on track 180° to cross MAPEL at 7000, then on track 187° to cross KUKSE at 5000, then on track 191° to ELISN, then on track 191° to MIKEJ, then on track 191°. Expect RADAR vectors to final approach course.

LANDING RUNWAYS 19L/C/R: From WAYNZ on track 180° to cross SULI at 10000, then on track 180°. Expect RADAR vectors to final approach course.



WAYNZ ONE ARRIVAL (RNAV)

(PRIVO.WAYNZ1) 21MAR24

WASHINGTON, DC
WASHINGTON DULLES INTL (IAD)

NE-3, 10 JUL 2025 to 07 AUG 2025

NE-3, 10 JUL 2025 to 07 AUG 2025