

24361

VOR/DME RWY 12
WASHINGTON DULLES INTL (IAD)

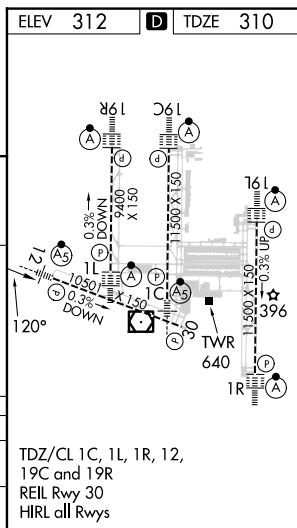
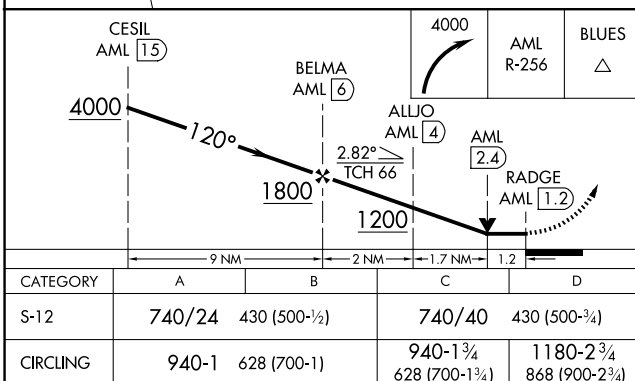
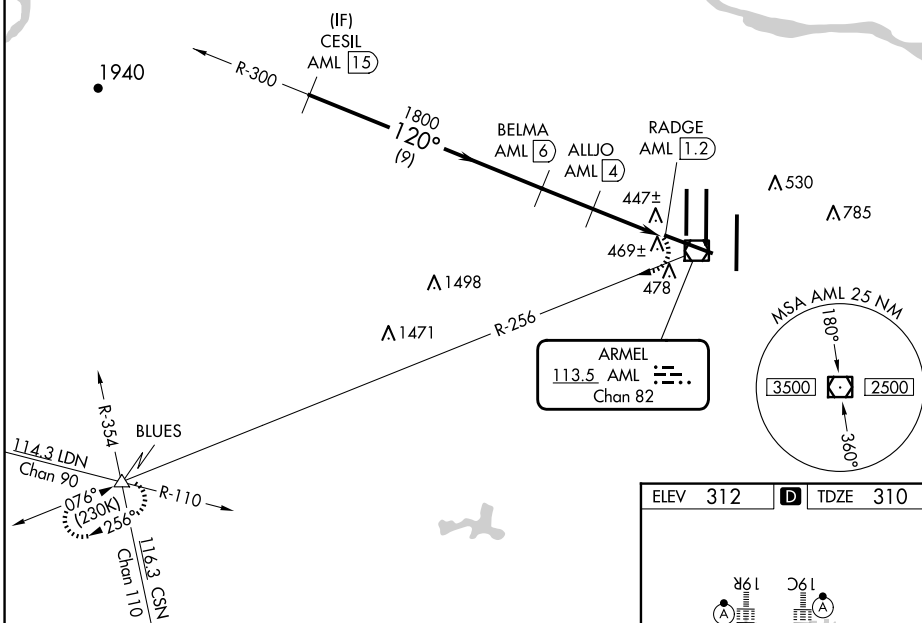


MISSED APPROACH: Climbing right turn to 4000 on AML VOR/DME R-256 to BLUES INT and hold.

D-ATIS
134.85

RADAR REQUIRED

CPDLC



WASHINGTON DULLES INTL (IAD)
VOR/DME RWY 12

NE-3, 10 JUL 2025 to 07 AUG 2025