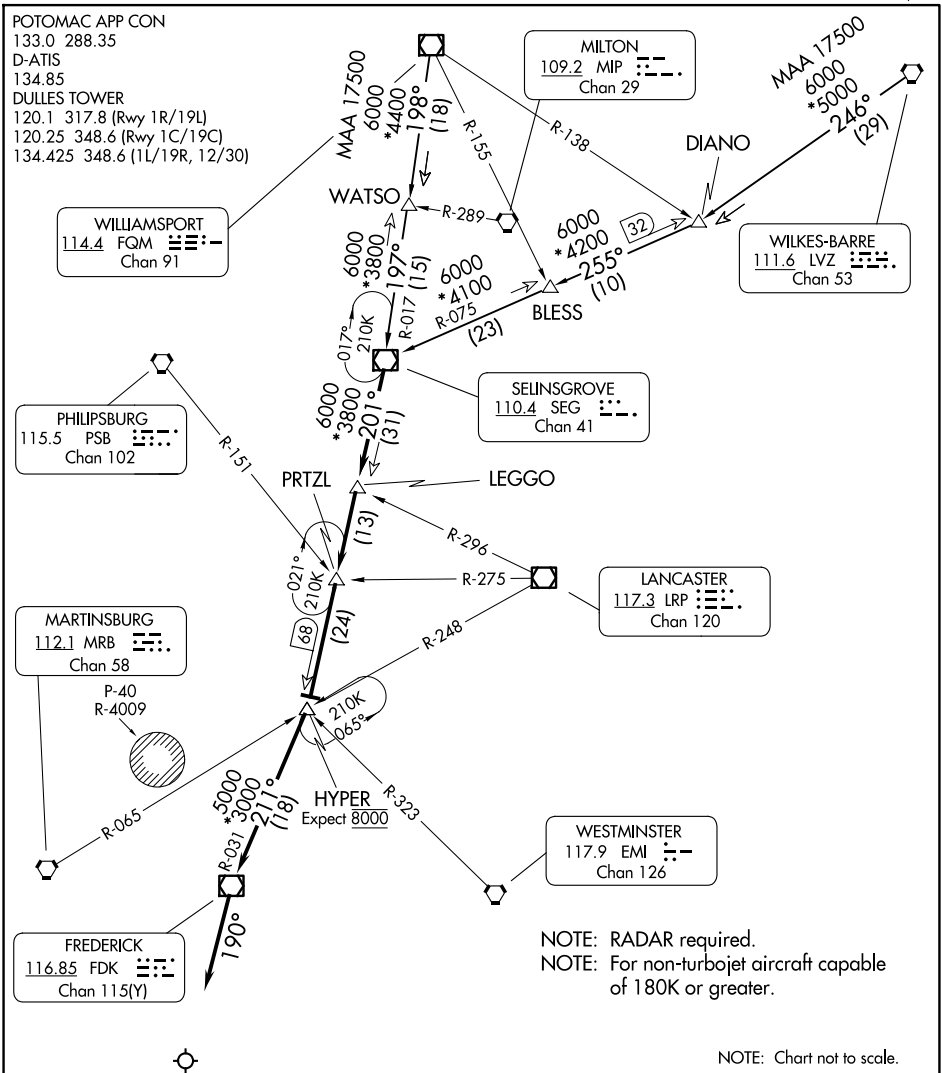


SELINGSGROVE SIX ARRIVAL



ARRIVAL ROUTE DESCRIPTION

WILKES-BARRE TRANSITION (LVZ.SEG6):  
From over LVZ VORTAC on LVZ R-246 and SEG R-075 to SEG VOR/DME. Thence....

WILLIAMSPORT TRANSITION (FQM.SEG6):  
From over FQM VOR/DME on FQM R-198 and SEG R-017 to SEG VOR/DME. Thence....

....From SEG VOR/DME on SEG R-201 to LEGGO, then on SEG R-201 to PRTZL, then on SEG R-201 to HYPER, then on FDK R-031 to FDK VOR/DME, then on heading 190° or as assigned by ATC. Expect RADAR vectors to final approach course.