

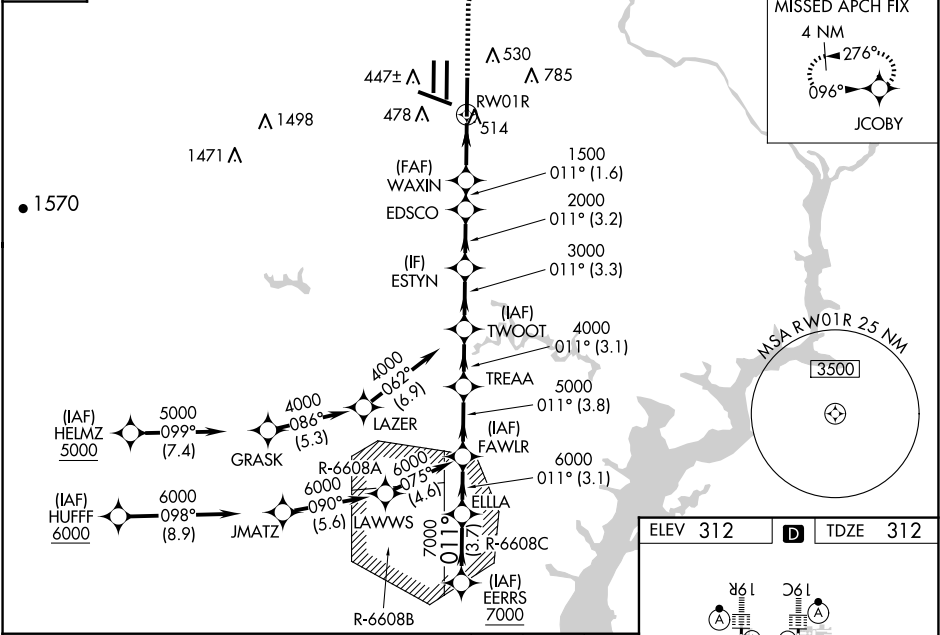
WAAS CH 56409 W01A	APP CRS 011°	Rwy ldg 11500 TDZE 312 Apt Elev 312
--	------------------------	--

RNAV (GPS) Y RWY 1R
WASHINGTON DULLES INTL (IAD)

RNP APCH - GPS.	ALSF-2	MISSED APPROACH: Climb to 780, then climbing right turn to 3000 direct JCOBY and hold.
▼ ▲ For uncompensated Baro-VNAV systems, LNAV/VNAV NA below -13°C or above 54°C. Simultaneous approach authorized. LNAV procedure NA during simultaneous operations. Use of FD or AP required during simultaneous operations. For inop ALS, increase LNAV/VNAV all Cats visibility to RVR 6000 and LNAV Cat C/D visibility to 1½ SM.	▲ ▲ ▲	

POTOMAC APP CON 120.45 306.925 (241°-330°) 128.525 306.925 (091°-240°) 126.1 338.25 (331°-090°)	DULLES TOWER 120.1 317.8 (Rwy 1R/19L) 120.25 348.6 (Rwy 1C/19C) 134.425 348.6 (Rwys 1L/19R and 12/30)	GND CON 121.9 317.8 (EAST) 121.625 348.6 (WEST)	CLNC DEL 135.7 317.8
---	---	---	--------------------------------

D-ATIS 134.85	CPDLC
-------------------------	-------



VGSI and RNAV glidepath not coincident (VGSI Angle 3.00/TCH 72).					780	3000	JCOBY	
EERRS	ELLA	FAWLR	TREAA	TWOOT	ESTYN	EDSCO	WAXIN	RW01R
7000	011°	7000	6000	5000	4000	3000	2000	1500
GP 3.00°								
TCH 55								
	→ 3.7 NM →	3.1 NM	3.8 NM	3.1 NM	3.3 NM	3.2 NM	← 1.6 NM →	2.3 NM
CATEGORY	A		B		C		D	
LPV DA			512/18		200 (200-½)			
LNAV/VNAV DA			728/40		416 (500-¾)			
LNAV MDA	780/24		468 (500-½)		780/50		468 (500-1)	
CIRCLING	940-1		628 (700-1)		940-1¾		1180-2¾	
					628 (700-1¾)		868 (900-2¾)	

1.2 NM to RW01R

2.3 NM

1.6 NM

780

3000

JCOBY

1.2 NM to RW01R

2.3 NM

1.6 NM

780

3000

JCOBY

1.2 NM to RW01R

2.3 NM

1.6 NM

780

3000

JCOBY

1.2 NM to RW01R

2.3 NM

1.6 NM

780

3000

JCOBY

1.2 NM to RW01R

2.3 NM

1.6 NM

780

3000

JCOBY

1.2 NM to RW01R

2.3 NM

1.6 NM

780

3000

JCOBY

1.2 NM to RW01R

2.3 NM

1.6 NM

780

3000

JCOBY

1.2 NM to RW01R

2.3 NM

1.6 NM

780

3000

JCOBY

1.2 NM to RW01R

2.3 NM

1.6 NM

780

3000

JCOBY

1.2 NM to RW01R

2.3 NM

1.6 NM

780

3000

JCOBY

1.2 NM to RW01R

2.3 NM

1.6 NM

780

3000

JCOBY

1.2 NM to RW01R

2.3 NM

1.6 NM

780

3000

JCOBY

1.2 NM to RW01R

2.3 NM

1.6 NM

780

3000

JCOBY

1.2 NM to RW01R

2.3 NM

1.6 NM

780

3000

JCOBY

1.2 NM to RW01R

2.3 NM

1.6 NM

780

3000

JCOBY

1.2 NM to RW01R

2.3 NM

1.6 NM

780

3000

JCOBY

1.2 NM to RW01R

2.3 NM

1.6 NM

780

3000

JCOBY

1.2 NM to RW01R

2.3 NM

1.6 NM

780

3000

JCOBY

1.2 NM to RW01R

2.3 NM

1.6 NM

780

3000

JCOBY

1.2 NM to RW01R

2.3 NM

1.6 NM

780

3000

JCOBY

1.2 NM to RW01R

2.3 NM

1.6 NM

780

3000

JCOBY

1.2 NM to RW01R

2.3 NM

1.6 NM

780

3000

JCOBY

1.2 NM to RW01R

2.3 NM

1.6 NM

780

3000

JCOBY

1.2 NM to RW01R

2.3 NM

1.6 NM

780

3000

JCOBY

1.2 NM to RW01R

2.3 NM

1.6 NM

780

3000

JCOBY

1.2 NM to RW01R

2.3 NM

1.6 NM

780

3000

JCOBY

1.2 NM to RW01R

2.3 NM

1.6 NM

780

3000

JCOBY

1.2 NM to RW01R

2.3 NM

1.6 NM

780

3000

JCOBY

1.2 NM to RW01R

2.3 NM

1.6 NM

780

3000

JCOBY

1.2 NM to RW01R

2.3 NM

1.6 NM

780

3000

JCOBY

1.2 NM to RW01R

2.3 NM

1.6 NM

780

3000

JCOBY

1.2 NM to RW01R

2.3 NM

1.6 NM

780

3000

JCOBY

1.2 NM to RW01R

2.3 NM

1.6 NM

780

3000

JCOBY

1.2 NM to RW01R

2.3 NM

1.6 NM

780

3000

JCOBY

1.2 NM to RW01R

2.3 NM

1.6 NM

780

3000

JCOBY

1.2 NM to RW01R

2.3 NM

1.6 NM

780

3000

JCOBY

1.2 NM to RW01R

2.3 NM

1.6 NM

780

3000

JCOBY

1.2 NM to RW01R

2.3 NM

1.6 NM

780

3000

JCOBY

1.2 NM to RW01R

2.3 NM

1.6 NM

780

3000

JCOBY

1.2 NM to RW01R

2.3 NM

1.6 NM

780

3000

JCOBY

1.2 NM to RW01R

2.3 NM

1.6 NM

780

3000

JCOBY

1.2 NM to RW01R

2.3 NM

1.6 NM

780

3000

JCOBY

1.2 NM to RW01R

2.3 NM

1.6 NM

780

3000

JCOBY

1.2 NM to RW01R

2.3 NM

1.6 NM

780

3000

JCOBY

1.2 NM to RW01R

2.3 NM

1.6 NM

780

3000

JCOBY

1.2 NM to RW01R

2.3 NM

1.6 NM

780

3000

JCOBY

1.2 NM to RW01R

2.3 NM

1.6 NM

780

3000

JCOBY

1.2 NM to RW01R

2.3 NM

1.6 NM

780

3000

JCOBY

1.2 NM to RW01R

2.3 NM

1.6 NM

780

3000

JCOBY

1.2 NM to RW01R

2.3 NM

1.6 NM

780

3000

JCOBY

1.2 NM to RW01R

2.3 NM

1.6 NM

780

3000

JCOBY

1.2 NM to RW01R

2.3 NM

1.6 NM

780

3000

JCOBY

1.2 NM to RW01R

2.3 NM

1.6 NM

780

3000

JCOBY

1.2 NM to RW01R

2.3 NM

1.6 NM

780

3000

JCOBY

1.2 NM to RW01R

2.3 NM

1.6 NM

780

3000

JCOBY

1.2 NM to RW01R

2.3 NM

1.6 NM

780

3000

JCOBY

1.2 NM to RW01R

2.3 NM

1.6 NM

780

3000

JCOBY

1.2 NM to RW01R

2.3 NM

1.6 NM

780

3000

JCOBY

1.2 NM to RW01R

2.3 NM

1.6 NM

780

3000

JCOBY

1.2 NM to RW01R

2.3 NM

1.6 NM

780

3000

JCOBY

1.2 NM to RW01R

2.3 NM

1.6 NM

780

3000

JCOBY

1.2 NM to RW01R

2.3 NM

1.6 NM

780

3000

JCOBY

1.2 NM to RW01R

2.3 NM

1.6 NM

780

3000

JCOBY

1.2 NM to RW01R

2.3 NM

1.6 NM

780

3000

JCOBY

1.2 NM to RW01R

2.3 NM

1.6 NM

780

3000

JCOBY

1.2 NM to RW01R

2.3 NM

1.6 NM

780

3000

JCOBY

1.2 NM to RW01R

2.3 NM

1.6 NM

780

3000

JCOBY

1.2

NE-3, 10 JUL 2025 to 07 AUG 2025

NE-3, 10 JUL 2025 to 07 AUG 2025