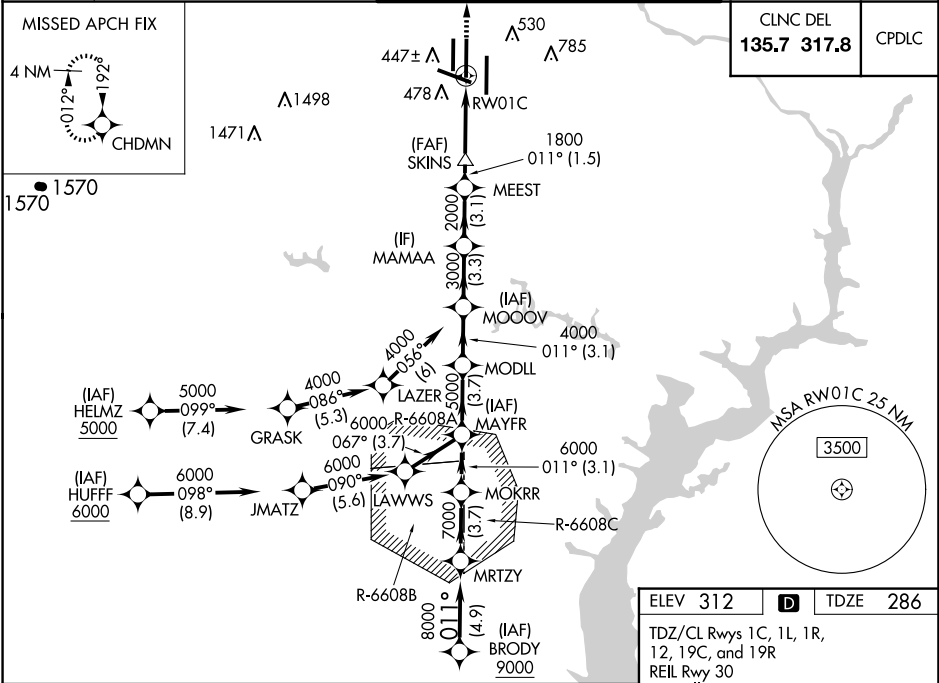


WAAS CH 97509 W01B	APP CRS 011°	Rwy ldg 11500 TDZE 286 Apt Elev 312
--	------------------------	--

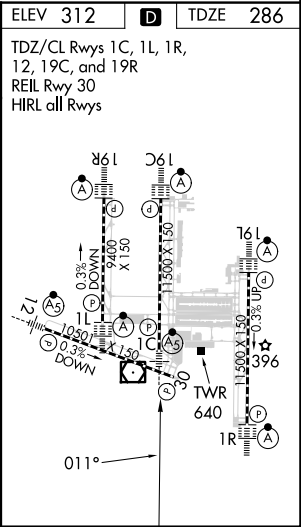
RNAV (GPS) Y RWY 1C
WASHINGTON DULLES INTL (IAD)

RNP APCH - GPS. ▼ ▲ For uncompensated Baro-VNAV systems, LNAV/VNAV NA below -13°C or above 54°C. ▲ Use of FD or AP required during simultaneous operations. LNAV procedure NA during simultaneous operations. Simultaneous approach authorized. For inop ALS, increase LNAV/VNAV all Cats visibility to 1½ SM. Increase LNAV Cat C/D visibility to 1¼ SM.	MALSR 	MISSED APPROACH: Climb to 4000 direct CHDMN and hold, continue climb-in-hold to 4000.
--	-----------	---

D-ATIS 134.85	POTOMAC APP CON 120.45 306.925 (241°-330°) 128.525 306.925 (091°-240°) 126.1 338.25 (331°-090°)	DULLES TOWER 120.1 317.8 (Rwy 1R/19L) 120.25 348.6 (Rwy 1C/19C) 134.425 348.6 (Rwys 1L/19R and 12/30)	GND CON 121.9 317.8 (EAST) 121.625 348.6 (WEST)
-------------------------	---	---	---



VGSI and RNAV glidepath not coincident (VGSI Angle 3.00/TCH 70).				
GP 3.00° TCH 54	4.9 NM	3.7 NM	3.1 NM	3.7 NM
CATEGORY	A	B	C	D
LPV DA	486/18	200 (200-½)		
LNAV/VNAV DA	801/55	515 (500-1)		
LNAV MDA	900/24	614 (600-½)	900-1¾	614 (600-1¾)
CIRCLING	940-1	628 (700-1)	940-1¾ 628 (700-1¾)	1180-2¾ 868 (900-2¾)



NE-3, 10 JUL 2025 to 07 AUG 2025

NE-3, 10 JUL 2025 to 07 AUG 2025