

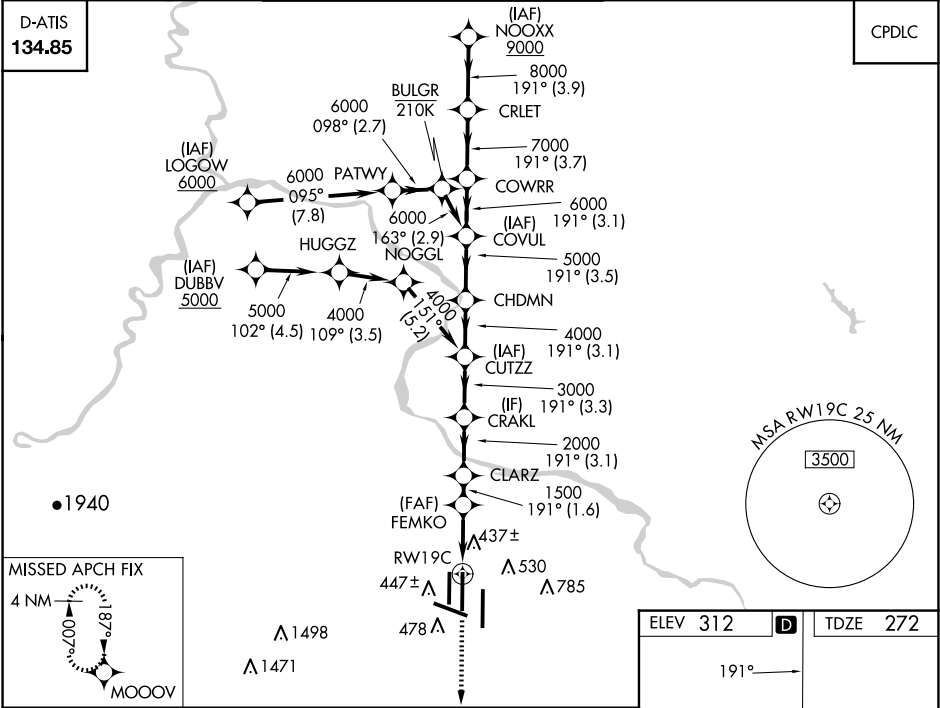
WAAS CH 40305 W19B	APP CRS 191°	Rwy Idg 11089 TDZE 272 Apt Elev 312
--	------------------------	--

RNAV (GPS) Y RWY 19C

WASHINGTON DULLES INTL (IAD)

RNP APCH - GPS.	ALSF-2	MISSED APPROACH: Climb to 3000 direct MOOOV and hold.
Simultaneous approach authorized. LNAV procedure NA during simultaneous operations. Use of FD or AP required during simultaneous operations. For uncompensated Baro-VNAV systems, LNAV/VNAV NA below -13°C or above 54°C.		

POTOMAC APP CON	DULLES TOWER	GND CON	CLNC DEL
120.45 306.925 (241°-330°)	120.1 317.8 (Rwy 1R/19L)	121.9 317.8 (EAST)	135.7 317.8
128.525 306.925 (091°-240°)	120.25 348.6 (Rwy 1C/19C)	121.625 348.6 (WEST)	
126.1 338.25 (331°-090°)	134.425 348.6 (Rwys 1L/19R and 12/30)		



3000	MOOOV	VGSI and RNAV glidepath not coincident (VGSI Angle 3.00/TCH 72).				NOOXX
		FEMKO	CUTZ	CHDMN	COVUL	CRLET
		1.1 NM to RWY19C	1500	2000	3000	4000
		1.1	2.6 NM	1.6 NM	3.1 NM	3.3 NM
						3.1 NM
						3.5 NM
						3.1 NM
						3.7 NM
						3.9 NM
CATEGORY		A		B		C
LPV DA				472/18		200 (200-½)
LNAV/VNAV DA				700/40		428 (400-¾)
LNAV MDA		700/24		428 (400-½)		700/40 428 (400-¾)
CIRCLING		940-1		628 (700-1)		940-1¾ 628 (700-1¾)

