

APP CRS 011°	Rwy Idg TDZE Apt Elev	9400 296 312
------------------------	-----------------------------	-----------------------------------------

RNAV (RNP) Z RWY 1L

WASHINGTON DULLES INTL (IAD)

RNP AR APCH - GPS.

T For uncompensated Baro-VNAV systems, procedure NA below -13°C or above 54°C. Simultaneous approach authorized. For inop ALS, increase RNP 0.11 all Cats visibility to RVR 4500 and RNP 0.30 all Cats visibility to RVR 6000.

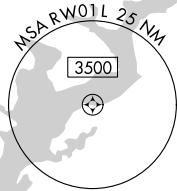
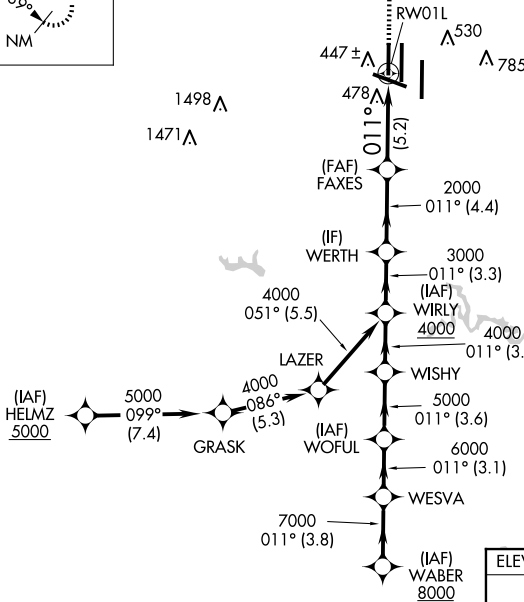
ALSF-2



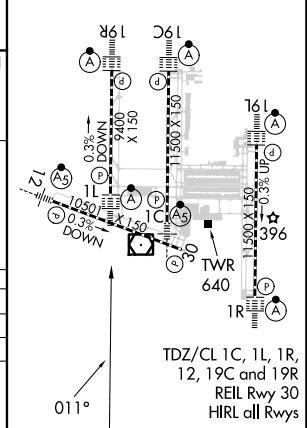
MISSED APPROACH: Climb to 800 then climbing left turn to 3000 direct NHLEN and hold.

POTOMAC APP CON	DULLES TOWER		GND CON	CLNC DEL
120.45 306.925 (241°-330°)	120.1 317.8 (Rwy 1R/19L)		121.9 317.8 (EAST)	
128.525 306.925 (091°-240°)	120.25 348.6 (Rwy 1C/19C)		121.625 348.6 (WEST)	135.7 317.8
126.1 338.25 (331°-090°)	134.425 348.6 (Rwys 1L/19R and 12/30)			

D-ATIS 134.85	MISSED APCH FIX NHLEN ▲		CPDLC
-------------------------	----------------------------	-----------------------------------------------------------------------------------	-------



ELEV 312	D	TDZE 296
----------	----------	----------



VGSI and RNAV glidepath not coincident (VGSI Angle 3.00/TCH 70).

CATEGORY	A	B	C	D
RNP 0.11 DA		572/24	276 (300-½)	
RNP 0.30 DA		710/40	414 (400-¾)	

AUTHORIZATION REQUIRED