

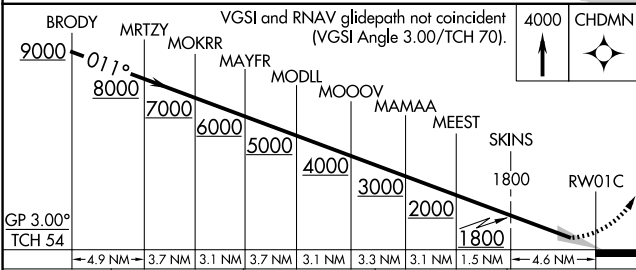
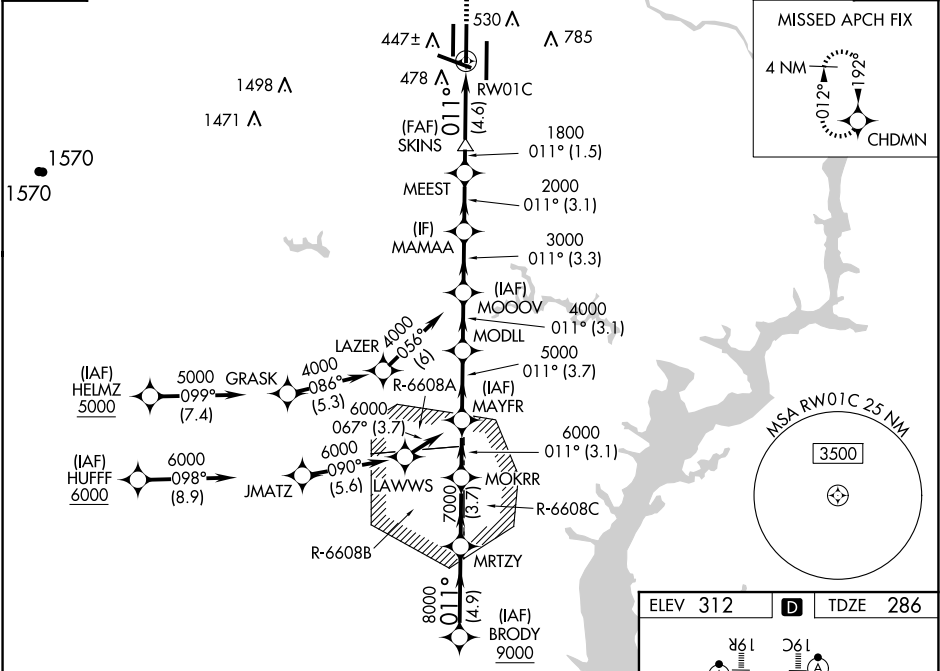
APP CRS	Rwy Idg	11500
011°	TDZE	286
	Apt Elev	312

RNAV (RNP) Z RWY 1C  
WASHINGTON DULLES INTL (IAD)

RNP AR APCH - GPS. Authorization required.	MALSR	MISSED APPROACH: Climb to 4000 direct CHDMN and hold, continue climb-in-hold to 4000.
Simultaneous approach authorized. For uncompensated Baro-VNAV systems, procedure NA below -13°C or above 54°C. For inop ALS, increase RNP 0.11 all Cats visibility to RVR 4000.		

POTOMAC APP CON	DULLES TOWER	GND CON	CLNC DEL
120.45 306.925 (241°-330°)	120.1 317.8 (Rwy 1R/19L)	121.9 317.8 (EAST)	135.7 317.8
128.525 306.925 (091°-240°)	120.25 348.6 (Rwy 1C/19C)	121.625 348.6 (WEST)	
126.1 338.25 (331°-090°)	134.425 348.6 (Rwys 1L/19R and 12/30)		

D-ATIS	CPDLC
134.85	



CATEGORY	A	B	C	D
RNP 0.11 DA	540/24	254 (300-½)		
RNP 0.30 DA	730/45	444 (500-¾)		

AUTHORIZATION REQUIRED

