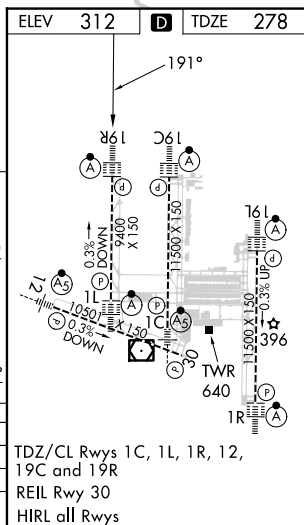
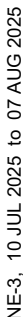


RNAV (RNP) Z RWY 19R  
WASHINGTON DULLES INTL (IAD)

**MISSED APPROACH:**  
Climb to 800 then climbing  
right turn to 3000 direct  
AMOSS and hold.




GND CON  
121.9 317.8 (EAST)  
121.625 348.6 (WEST)



TDZ/CL Rwy 1C, 1L, 1R, 12,  
19C and 19R  
REIL Rwy 30  
HIRL all Rwy's

**AUTHORIZATION REQUIRED**