

APP CRS	Rwy Idg	11500
191°	TDZE	302
	Apt Elev	312

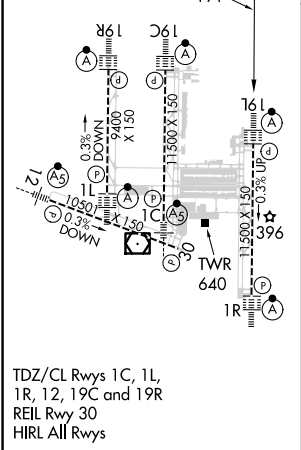
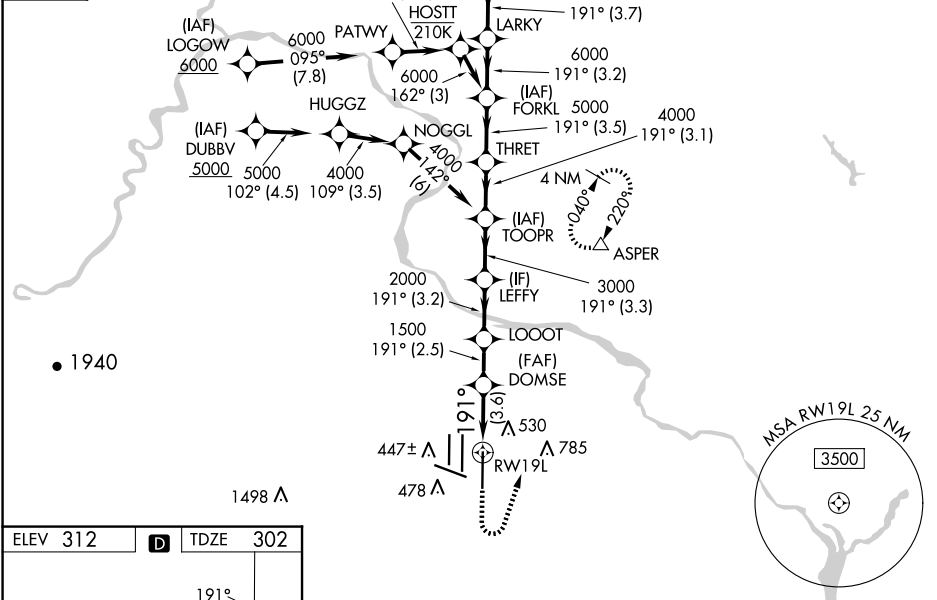
RNAV (RNP) Z RWY 19L

WASHINGTON DULLES INTL (IAD)

RNP AR APCH - GPS.	ALSF-2	MISSED APPROACH: Climb to 800 then climbing left turn to 3000 direct ASPER and hold.
▼ For uncompensated Baro-VNAV systems, procedure NA below -13°C or above 54°C. Simultaneous approach authorized. For inop ALS, increase RNP 0.11 all Cats visibility to RVR 4500.		

POTOMAC APP CON	DULLES TOWER	GND CON	CLNC DEL
120.45 306.925 (241°-330°)	120.1 317.8 (Rwys 1R/19L)	121.9 317.8 (EAST)	135.7 317.8
128.525 306.925 (091°-240°)	120.25 348.6 (Rwy 1C/19C)	121.625 348.6 (WEST)	
126.1 338.25 (331°-090°)	134.425 348.6 (Rwys 1L/19R and 12/30)		

D-ATIS	CPDLC
134.85	



ELEV 312	TDZE 302
D	
191°	
800 3000 ASPER	
VGSI and RNAV glidepath not coincident (VGSI Angle 3.00/TCH 75).	
LEMIU	
FORKL	
THRET	
TOOPR	
LEFFY	
LOOOT	
DOMSE	
RW19L	
1500 2000 3000 4000 5000 6000 7000	
GP 3.00° TCH 55	
3.6 NM 2.5 NM 3.2 NM 3.3 NM 3.1 NM 3.5 NM 3.2 NM 3.7 NM	
CATEGORY	A B C D
RNP 0.11 DA	620/24 318 (400-1/2)
RNP 0.15 DA	684/35 382 (400-3/4)
RNP 0.30 DA	730/40 428 (500-3/4)
AUTHORIZATION REQUIRED	