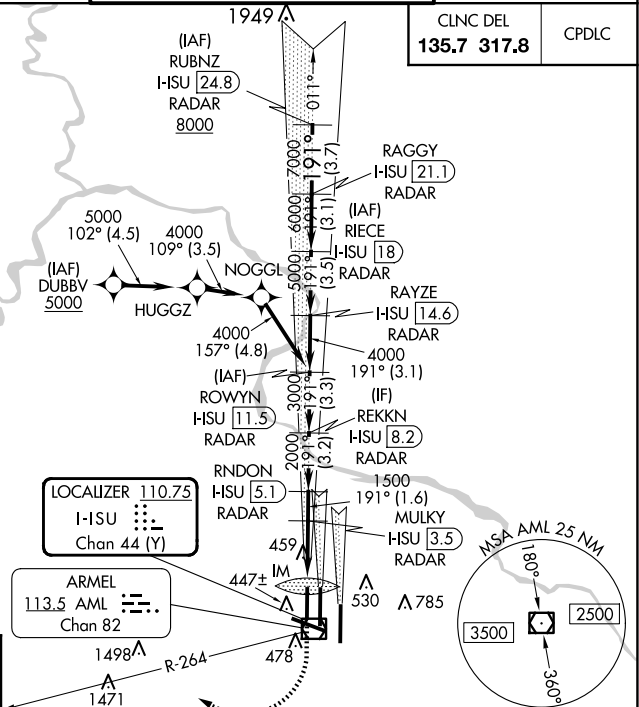


ILS or LOC RWY 19R
WASHINGTON DULLES INTL (IAD)

MISSED APPROACH: Climb to 800 then climbing right turn to 3000 on heading 280° and AML VOR/DME R-264 to AMOSS INT/AML 20.4 DME and hold.

Simultaneous approach authorized.



800	3000	AML R-264	AMOSS INT	REKKN H-SU [8.2]	RAYZE H-SU [14.6]	RAGGY H-SU [21.1]	RUBNZ H-SU [24.8]
↑	hdg 280°			RADAR	RADAR	RADAR	RADAR
I-SU DME ANTENNA	MULKY I-SU [3.5]	RNDON I-SU [5.1]	ROWYN I-SU [11.5]	RIECE I-SU [18]			
I-SU [0.2] IM	I-SU [1]						
1500	1500	2000	3000	4000	5000	6000	7000
0.1	1.1	2.5	1.6 NM	3.2	3.3	3.1	3.5
CATEGORY	A	B	C	D			
S-ILS 19R	478/18 200 (200-½)						
S-LOC 19R	720/24 442 (500-½)			720/45 442 (500-¾)			
CIRCLING	940-1 628 (700-1)			940-1¾ 628 (700-1¾)		1180-2¾ 868 (900-2¾)	