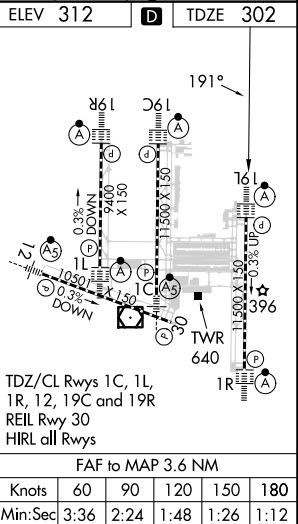
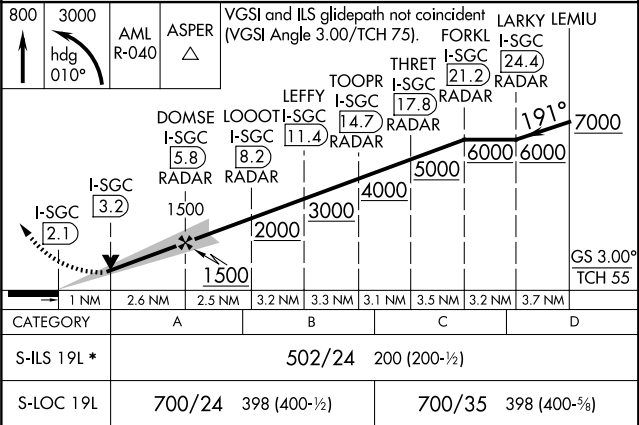
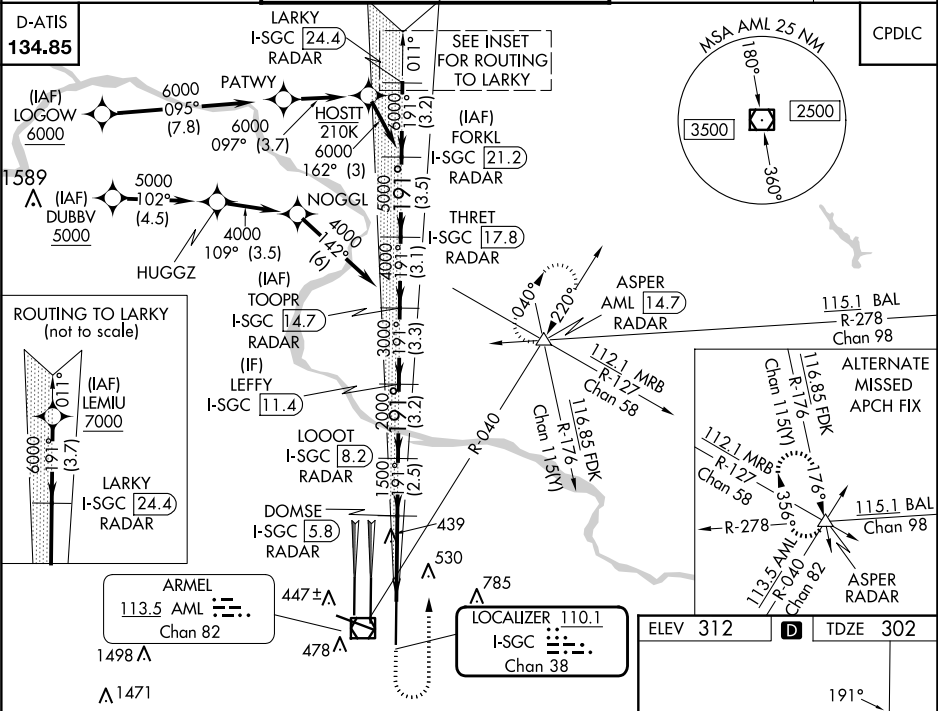


LOC/DME I-SCG	APP CRS	Rwy Ldg
<b>110.1</b>	<b>191°</b>	<b>11500</b>
Chan <b>38</b>		TDZE <b>302</b>
		Apt Elev <b>312</b>

ILS or LOC RWY 19L  
WASHINGTON DULLES INTL (IAD)

RNP APCH - GPS. From LOGOW, or DUBBV, or LEMIU.	ALSF-2	MISSED APPROACH: Climb to 800 then climbing left turn to 3000 on heading 010° and on AML VOR/DME R-040 to ASPER INT/AML 14.7 DME and hold.
DME or RADAR required. RADAR required for procedure entry at LEMIU.		
Simultaneous approach authorized.		
*RVR 1800 authorized with use of FD or AP or HUD to DA.		

POTOMAC APP CON	DULLES TOWER	GND CON	CLNC DEL
<b>120.45 306.925</b> (241°-330°)	<b>120.1 317.8</b> (Rwy 1R/19L)	<b>121.9 317.8</b> (EAST)	<b>135.7 317.8</b>
<b>128.525 306.925</b> (091°-240°)	<b>120.25 348.6</b> (Rwy 1C/19C)	<b>121.625 348.6</b> (WEST)	
<b>126.1 338.25</b> (331°-090°)	<b>134.425 348.6</b> (Rwys 1L/19R and 12/30)		



NE-3, 10 JUL 2025 to 07 AUG 2025

NE-3, 10 JUL 2025 to 07 AUG 2025