

LOC/DME I-AD 110.1 Chan 38	APP CRS 011°	Rwy Idg 11500 TDZE 312 Apt Elev 312
---	------------------------	--

ILS RWY 1R (CAT II & III)
WASHINGTON DULLES INTL (IAD)

RNP APCH-GPS. From HELMZ, or HUFFF.

DME or RADAR required.

RADAR required for procedure entry at EERRS.

T Simultaneous approach authorized.

ALSF-2



MISSED APPROACH: Climb to 800 then climbing right turn to 3000 on heading 060° and EMI VORTAC R-219 to EMI VORTAC and hold.

POTOMAC APP CON	DULLES TOWER	GND CON	CINC DEL
120.45 306.925 (241°-330°)	120.1 317.8 (Rwy 1R/19L)	121.9 317.8 (EAST)	135.7 317.8
128.525 306.925 (091°-240°)	120.25 348.6 (Rwy 1C/19C)	121.625 348.6 (WEST)	
126.1 338.25 (331°-090°)	134.425 348.6 (Rwys 1L/19R and 12/30)		

D-ATIS
134.85

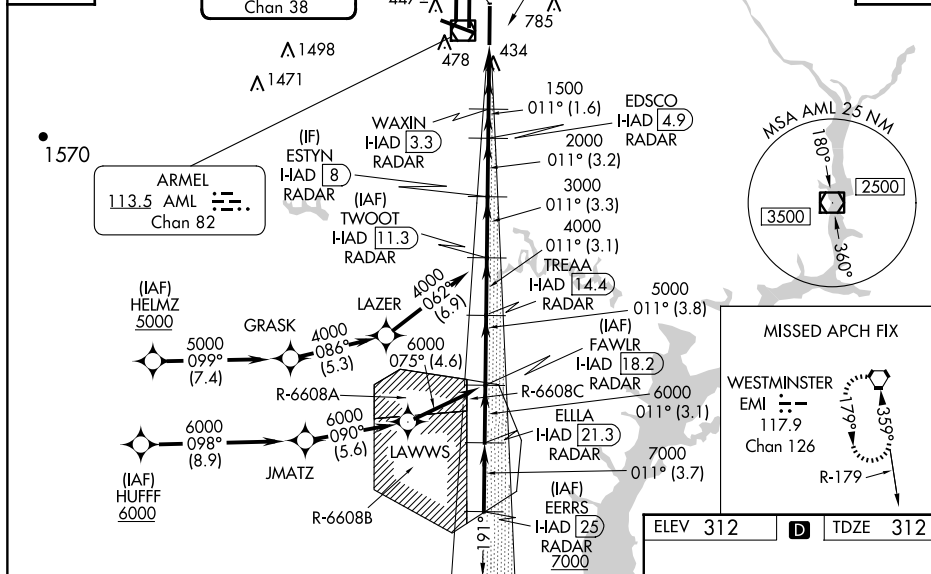
LOCALIZER 110.1

I-AD

530 A

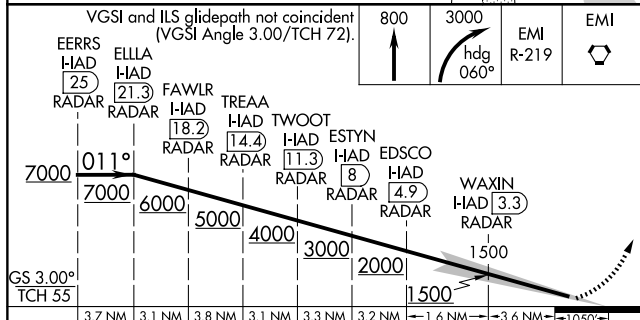
117.9 EMI
R-219
Chan 126

CPDLC



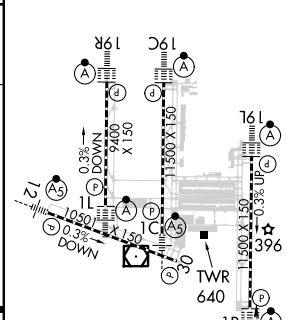
ELEV 312	D	TDZE 312
----------	----------	----------

VGSI and ILS glidepath not coincident
(VGSI Angle 3.00/TCH 72).



CATEGORY	A	B	C	D
S-ILS 1R	CAT II	RA 94/12	100 DA 412	
S-ILS 1R		CAT III	RVR 06	

CATEGORY II & III ILS - SPECIAL AIRCREW
& AIRCRAFT CERTIFICATION REQUIRED



TDZ/CL Rwy 1C, 1L,
1R, 12, 19C and 19R
REIL Rwy 30
HIRL all Rwys