
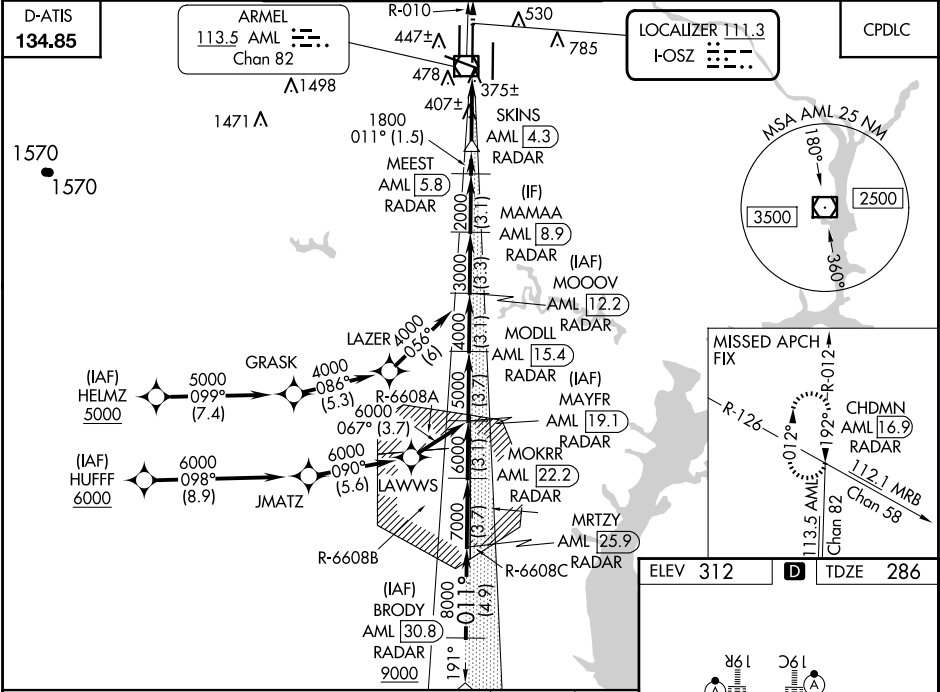


LOC I-OSZ 111.3	APP CRS 011°	Rwy ldg 11500 TDZE 286 Apt Elev 312
---------------------------	------------------------	--

ILS RWY 1C (SA CAT II)
WASHINGTON DULLES INTL (IAD)

RNP APCH-GPS. From HELMZ or HUFF.		MALSR 	MISSED APPROACH: Climb to 4000 on AML VOR/DME R-010 to CHDMN/AML 16.9 DME/RADAR and hold, continue climb-in-hold to 4000.		
DME or RADAR required. RADAR required for procedure entry at BRODY.					
▼ Simultaneous approach authorized. DME from AML VOR/DME. DME use requires simultaneous reception of I-OSZ and AML DME. Requires specific OPSPEC, MSPEC, or LOA approval.					
POTOMAC APP CON 120.45 306.925 (241°-330°) 128.525 306.925 (091°-240°) 126.1 338.25 (331°-090°)		DULLES TOWER 120.1 317.8 (Rwy 1R/19L) 120.25 348.6 (Rwy 1C/19C) 134.425 348.6 (Rwys 1L/19R and 12/30)		GND CON 121.9 317.8 (EAST) 121.625 348.6 (WEST)	CLNC DEL 135.7 317.8



BRODY AML [30.8] RADAR	MOKRR AML [22.2] RADAR	MODLL AML [15.4] RADAR	MAMAA AML [8.9] RADAR	CHDMN AML [16.9] RADAR
AML [25.9] RADAR	MAYFR AML [19.1] RADAR	MOOOV AML [12.2] RADAR	MEEST AML [5.8] RADAR	SKINS AML [4.3] RADAR
GS 3.00° TCH 54	7000	6000	5000	4000
VGSI and ILS glidepath not coincident (VGSI Angle 3.00/TCH 70).				
4.9 NM	3.7 NM	3.1 NM	3.7 NM	3.1 NM
3.7 NM	3.1 NM	3.3 NM	3.1 NM	1.5 NM
4.6 NM	4.6 NM	4.6 NM	4.6 NM	4.6 NM
CATEGORY	A	B	C	D
S-ILS 1C	RA 104/12 100 DA 386			

SA CATEGORY II ILS - SPECIAL AIRCREW
& AIRCRAFT CERTIFICATION REQUIRED

