


ILS RWY 19L (SA CAT II)  
WASHINGTON DULLES INTL (IAD)

ALSF-2

**MISSED APPROACH:** Climb to 800 then climbing left turn to 3000 on heading 010° and on AML VOR/DME R-040 to ASPER INT/AML 14.7 DME and hold.

**A**

[illegible]

ARMEL  
113.5 AML   
Chan 82

A 1471

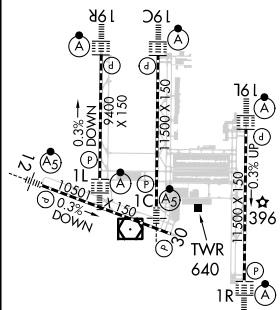
Altitude (m)	Climb Rate (TCH)	Climb Angle (°)
1500	1500	-
2000	2000	-
3000	3000	-
4000	4000	-
5000	5000	-
6000	6000	19.1
7000	7000	-

Altitude (m)	Climb Rate (TCH)	Climb Angle (°)
1500	1500	-
2000	2000	-
3000	3000	-
4000	4000	-
5000	5000	-
6000	6000	19.1
7000	7000	-

	←999→	←3.6 NM→	2.5 NM	3.2 NM	3.3 NM	3.1 NM	3.5 NM	3.2 NM	3.7 NM	
CATEGORY	A			B		C			D	
S-ILS 19L	RA 100/12 100 DA 402									

SA CATEGORY II ILS - SPECIAL AIRCREW  
& AIRCRAFT CERTIFICATION REQUIRED

ELEV 312	<b>D</b>	TDZE 302
----------	----------	----------



TDZ/CL Rwy 1C, 1L,  
1R, 12, 19C and 19R  
REIL Rwy 30  
HIRL all Rwys

NE-3, 10 JUL 2025 to 07 AUG 2025