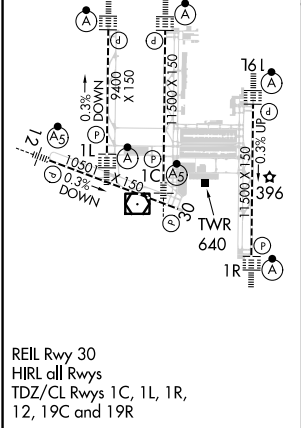
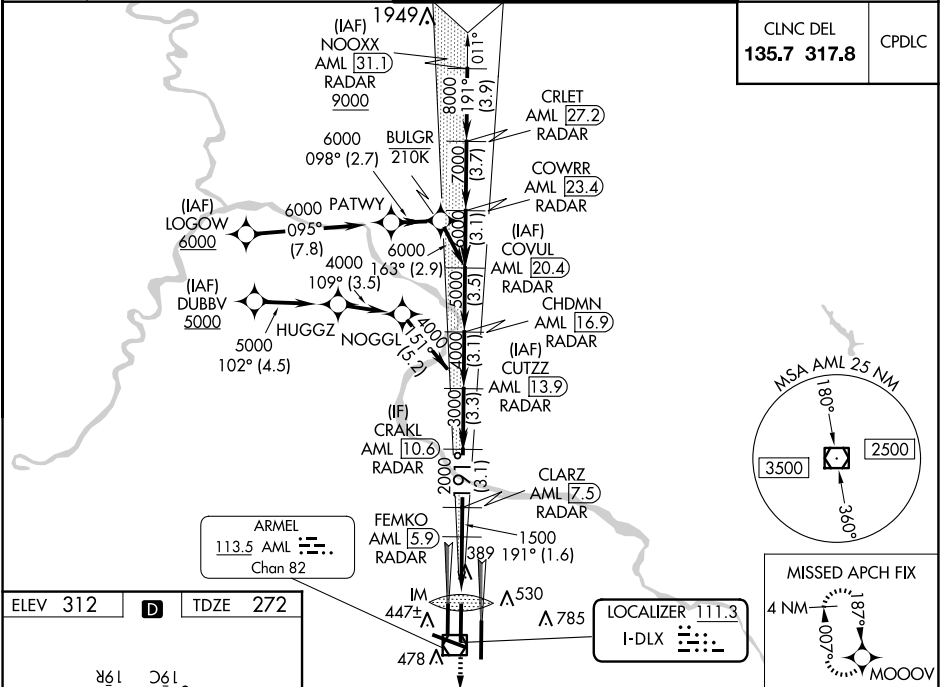


LOC I-DLX 111.3	APP CRS 191°	Rwy Idg 11089 TDZE 272 Apt Elev 312
---------------------------	------------------------	--

ILS RWY 19C (CAT II & III)
WASHINGTON DULLES INTL (IAD)

RNP APCH - GPS. RADAR required for procedure entry at NOOXX. DME or RADAR required.	ALS-F-2 	MISSED APPROACH: Climb to 3000 direct MOOOV and hold.
Simultaneous approach authorized. DME from AML VOR/DME. DME use requires simultaneous reception of I-DLX and AML DME.		

D-ATIS 134.85	POTOMAC APP CON 120.45 306.925 (241°-330°) 128.525 306.925 (091°-240°) 126.1 338.25 (331°-090°)	DULLES TOWER 120.1 317.8 (Rwy 1R/19L) 120.25 348.6 (Rwy 1C/19C) 134.425 348.6 (Rwys 1L/19R and 12/30)	GND CON 121.9 317.8 (EAST) 121.625 348.6 (WEST)
-------------------------	---	---	---



3000 MOOOV	VGSI and ILS glidepath not coincident (VGSI Angle 3.00/TCH 72).		NOOXX AML [31.1] RADAR
IM 368	FEMKO AML [5.9] RADAR	CLARZ AML [7.5] RADAR	CRALK AML [10.6] RADAR
1500	CUTZZ AML [13.9] RADAR	CHDMN AML [16.9] RADAR	COVUL AML [20.4] RADAR
2000	CLARZ AML [7.5] RADAR	COWRR AML [23.4] RADAR	CRLET AML [27.2] RADAR
3000	IM 368	NOOXX AML [31.1] RADAR	
4000			
5000			
6000			
7000			
8000			
9000			
GS 3.00° TCH 54			
1-1030'	3.7 NM	1.6 NM	3.1 NM
CATEGORY	A	B	C
S-ILS 19C	CAT II RA 110/12 100 DA 372		
S-ILS 19C	CAT IIIa RVR 07		
S-ILS 19C	CAT IIIb RVR 06		
S-ILS 19C	CAT IIIc NA		
CATEGORY II & III ILS - SPECIAL AIRCREW & AIRCRAFT CERTIFICATION REQUIRED			

NE-3, 10 JUL 2025 to 07 AUG 2025

NE-3, 10 JUL 2025 to 07 AUG 2025