

NE-3, 10 JUL 2025 to 07 AUG 2025

D-ATIS 134.85
CINC DEL 135.7 317.8
CPDLC
GND CON
121.9 317.8 (EAST)
121.625 348.6 (WEST)
DULLES TOWER
120.1 317.8 (Rwy 1R/19L)
120.25 348.6 (Rwy 1C/19C)
134.425 348.6 (Rwys 1L/19R, 12/30)
POTOMAC DEP CON
126.65

TOP ALTITUDE:
3000

RAMAY
*8400
*4600
301°
(15)

BUNZZ

272°
(10)

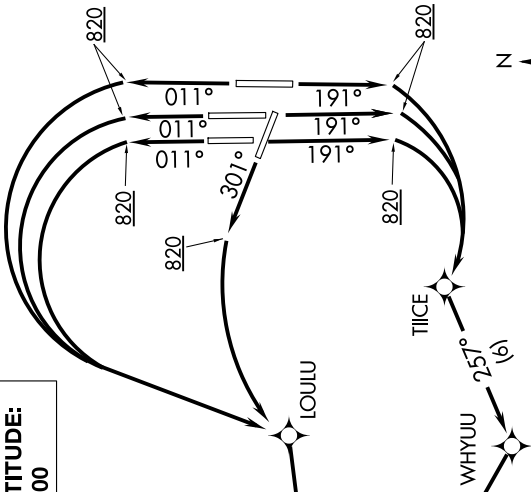
LOULU

NOTE: DME/DME/IRU or GPS required.
NOTE: RNAV 1.
NOTE: Turbojets only.
NOTE: Radar required.
NOTE: Aircraft may be Radar vectored to LOULU, TIICE, WHYUU, BUNZZ, or RAMAY.

DEPARTURE ROUTE DESCRIPTION

TAKEOFF RUNWAYS 1C/1L/1R: Climb heading 011° to 820, then left turn direct LOULU (or heading assigned by ATC), then on depicted course to BUNZZ, thence. . .
TAKEOFF RUNWAYS 19C/19R/19L: Climb heading 191° to 820, then right turn direct TIICE (or heading assigned by ATC), then on depicted course to BUNZZ, thence. . .
TAKEOFF RUNWAY 30: Climb heading 301° to 820, then left turn direct LOULU (or heading assigned by ATC), then on depicted course to BUNZZ, thence. . .
. . . Maintain 3000. Expect clearance to filed altitude within ten (10) minutes after departure.

RAMAY TRANSITION (BUNZZ3.RAMAY)



TAKEOFF MINIMUMS:
Rwy 12: NA-ATC.
Rwy 1C, 1L, 1R, 19C, 19L, 19R, 30:
Standard with minimum climb of 500'
per NM to 820.

NOTE: Chart not to scale.

NE-3, 10 JUL 2025 to 07 AUG 2025