

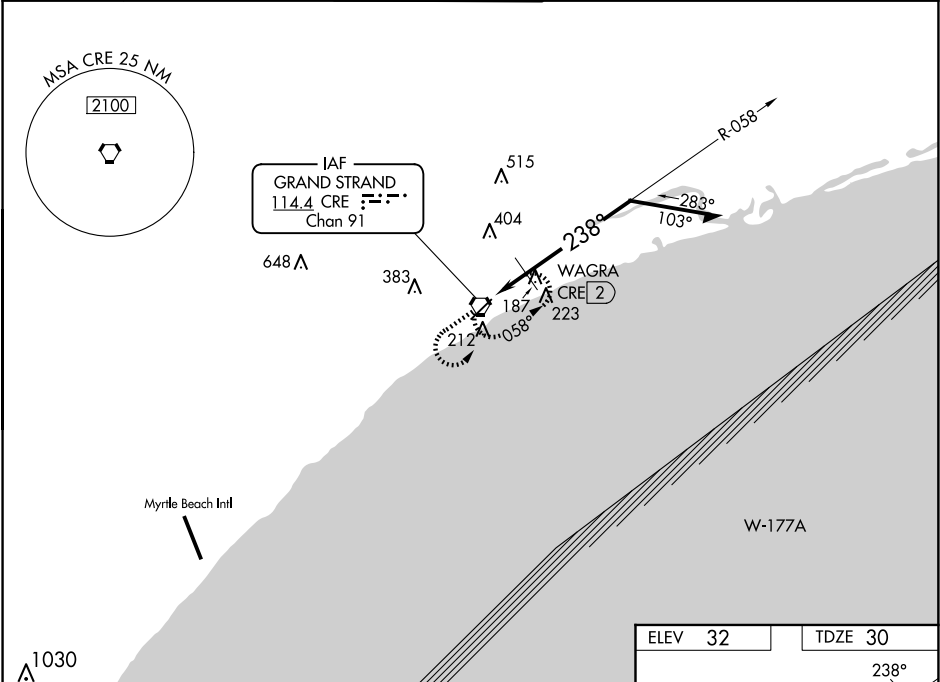
⚠

Rwy 23 helicopter visibility reduction below $\frac{3}{4}$ SM NA.
For inop ALS, increase S-23 Cats A/B visibility to 1 SM.

MALSR

MISSED APPROACH: Climb to 2000 then left turn direct CRE VORTAC and hold.

ATIS 119.625	MYRTLE BEACH APP CON* 119.2 350.3	STRAND TOWER* 124.6 (CTAF) 0 257.6	GND CON 121.8 257.6	CLNC DEL 121.8	UNICOM 122.95
-----------------	--------------------------------------	---------------------------------------	------------------------	-------------------	------------------



2000

↑

CRE

CRE VORTAC

058°

1700

238°

580

3.00°

TCH 55

0.4

1.6 NM

Remain within 10 NM

CATEGORY	A	B	C	D
S-23	580- $\frac{3}{4}$	550 (600- $\frac{3}{4}$)	580-1 $\frac{1}{8}$	550 (600-1 $\frac{1}{8}$)
CIRCLING	580-1	548 (600-1)	720-2 688 (700-2)	720-2 $\frac{1}{4}$ 688 (700-2 $\frac{1}{4}$)
WAGRA FIX MINIMUMS				
S-23	480- $\frac{3}{4}$	450 (500- $\frac{3}{4}$)	480- $\frac{7}{8}$	450 (500- $\frac{7}{8}$)
CIRCLING	520-1	488 (500-1)	720-2 688 (700-2)	720-2 $\frac{1}{4}$ 688 (700-2 $\frac{1}{4}$)

