

WAAS

CH 42819

W23A

APP CRS

234°

Rwy Idg

5997

TDZE

30

Apt Elev

32

RNAV (GPS) RWY 23

GRAND STRAND (CRE)

RNP APCH-GPS.

▼

⚠

Rwy 23 helicopter visibility reduction below ¾ SM NA. For uncompensated Baro-VNAV systems, LNAV/VNAV NA below -7°C or above 54°C. For inop ALS, increase LNAV/VNAV all Cats visibility to 1½ SM; increase LNAV Cats A/B visibility to 1 SM.

MALSR

AS

⬆

⬆

⬆

MISSED APPROACH: Climb to 1000 then climbing right turn to 2000 direct OTCEN and hold.

ATIS

119.625

MYRTLE BEACH APP CON\*

119.2 350.3

STRAND TOWER\*

124.6 (CTAF) 0 257.6

GND CON

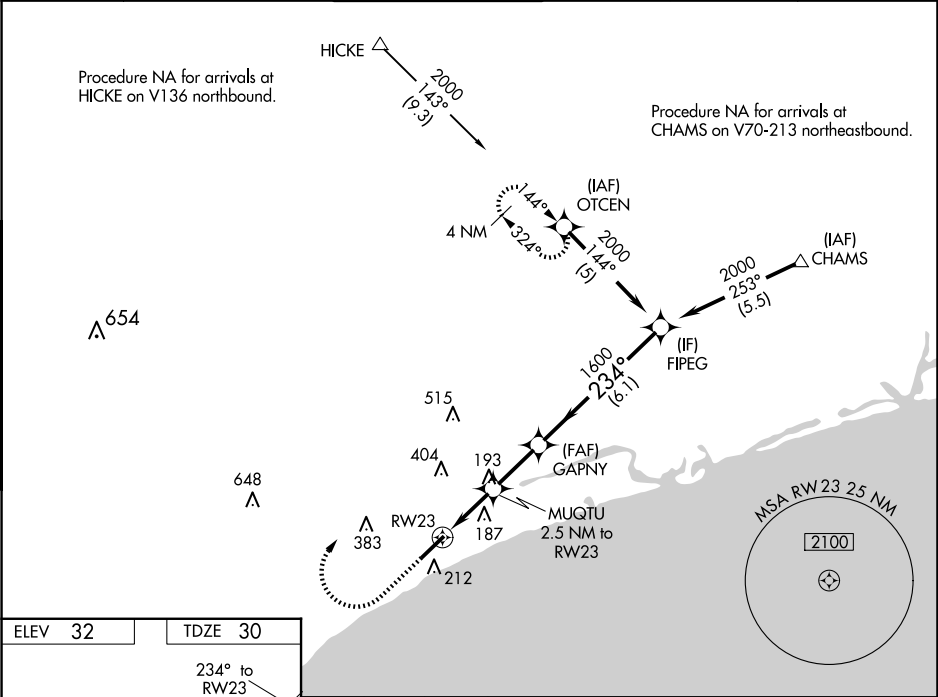
121.8 257.6

CLNC DEL

121.8

UNICOM

122.95



ELEV 32

TDZE 30

234° to RW23

AS

5997 X 100

TWR 107

110

1000

2000

OTCEN

GAPNY

1600

FIPEG

2000

MUQTU

1600

2.5 NM to RW23

1.3 NM to RW23

880

1600

GP 3.00°

TCH 55

1.3 NM

1.2 NM

2.3 NM

6.1 NM

CATEGORY	A	B	C	D
LPV DA		230-½	200 (200-½)	
LNAV/VNAV DA		412-¾	382 (400-¾)	
LNAV MDA	480-¾	450 (500-¾)	480-⅞	450 (500-⅞)
CIRCLING	520-1	488 (500-1)	720-2 688 (700-2)	720-2 ¼ 688 (700-2 ¼)

REIL Rwy 5 0

HIRL Rwy 5-23 0