

VOR RWY 16

VOR FXU <b>108.4</b>	APCH CRS <b>158°</b>	Rwy ldg TDZE Arpt Elev <b>3913</b> <b>328</b> <b>330</b>
-------------------------	-------------------------	---

[USA]

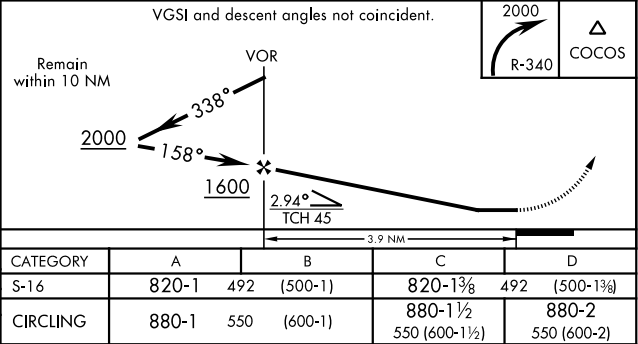
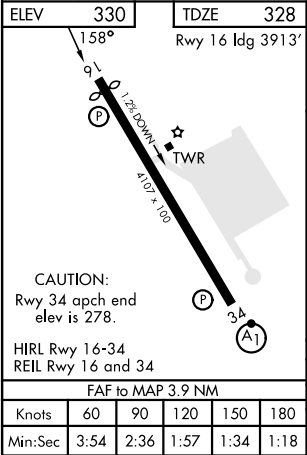
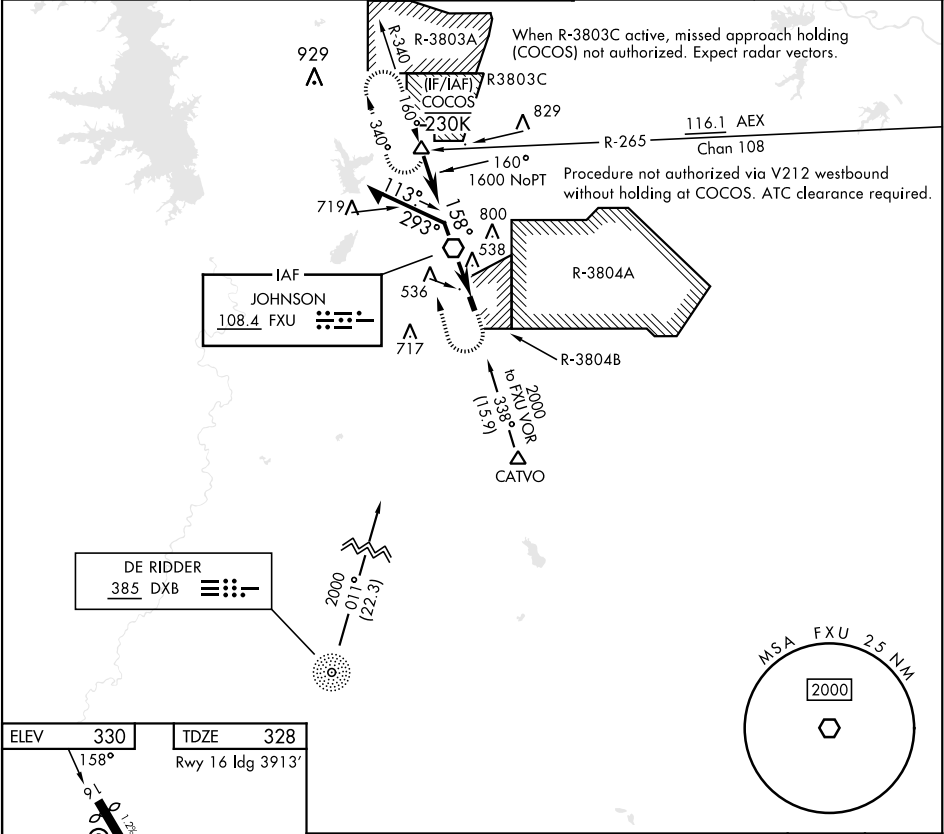
MAKS AAF (KPOE)

RADAR required for arrivals at DXB NDB and CATVO.

MISSED APPROACH: Climbing right turn to 2000 on FXU  
VOR R-340 to COCOS int and hold.

Helicopter visibility reduction below ¾ miles NA.

ATIS <b>134.85 282.2</b>	APP CON <b>123.7 261.3</b>	TOWER★ <b>119.0(CTAF) 257.75</b>	GND CON <b>121.8 239.25</b>	ASR/PAR
-----------------------------	-------------------------------	-------------------------------------	--------------------------------	---------



VOR RWY 16

SC-4, 10 JUL 2025 to 07 AUG 2025

SC-4, 10 JUL 2025 to 07 AUG 2025