

FORT JOHNSON, LOUISIANA

RNAV (GPS) RWY 16

WAAS CH <b>99069</b> <b>W16A</b>	APCH CRS <b>158°</b>	Rwy ldg TDZE <b>328</b> Arpt Elev <b>330</b>
--	-------------------------	--

[USA]

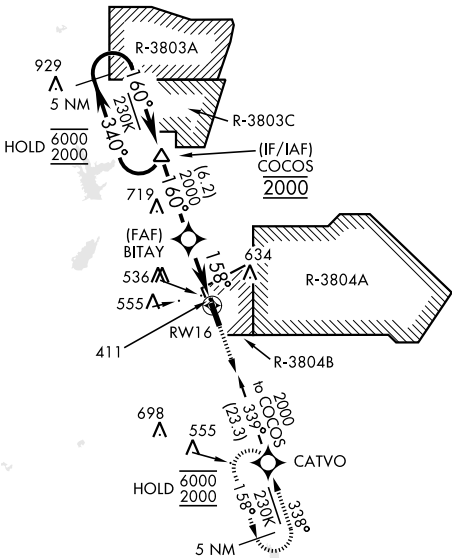
MAKS AAF (KPOE)

RNP APCH - GPS	MISSED APPROACH: Climb to 2000 direct CATVO and hold.
RADAR required for arrivals at CATVO.	
▼ For uncompensated Baro-VNAV systems, LNAV/VNAV not authorized below -15°C or above 54°C. When control tower is closed, increase vis to 1 mile.	

ATIS <b>134.85 282.2</b>	APP CON <b>123.7 261.3</b>	TOWER ★ <b>119.0 (CTAF) 257.75</b>	GND CON <b>121.8 239.25</b>	ASR/PAR
-----------------------------	-------------------------------	---------------------------------------	--------------------------------	---------

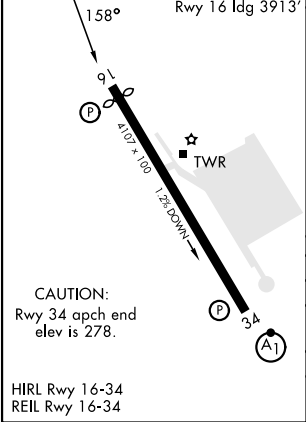
NoPT for arrival at COCOS on V212 eastbound.

When R-3803C is active, procedure entry from COCOS not authorized. Expect radar vectors to final.



ELEV <b>330</b>	TDZE <b>328</b>
-----------------	-----------------

Rwy 16 ldg 3913'



5 NM Holding Pattern

2000

160°

2000

340°

GP 3.00°

TCH 45

COCOS

BITAY

1.3 NM to RW16

RW16

5.1 NM

2000

158°

2000

2000

↑

CATVO

CATEGORY	A		B		C		D	
LPV DA	611-7 <sup>5</sup> / <sub>8</sub>		283		(300-7 <sup>5</sup> / <sub>8</sub> )			
LNAV/VNAV DA	800-1 <sup>5</sup> / <sub>8</sub>		472		(500-1 <sup>5</sup> / <sub>8</sub> )			
LNAV MDA	800-1	472	(500-1)		800-1 <sup>5</sup> / <sub>8</sub>	472	(500-1 <sup>5</sup> / <sub>8</sub> )	
<b>C</b> CIRCLING	880-1	550	(600-1)		880-1 <sup>1</sup> / <sub>2</sub> 550 (600-1 <sup>1</sup> / <sub>2</sub> )		940-2 610 (700-2)	

FORT JOHNSON, LOUISIANA

31° 03' N-93° 11' W

MAKS AAF (KPOE)

Amtd 3 15MAY25

RNAV (GPS) RWY 16

SC-4, 10 JUL 2025 to 07 AUG 2025

SC-4, 10 JUL 2025 to 07 AUG 2025