

RNP APCH.

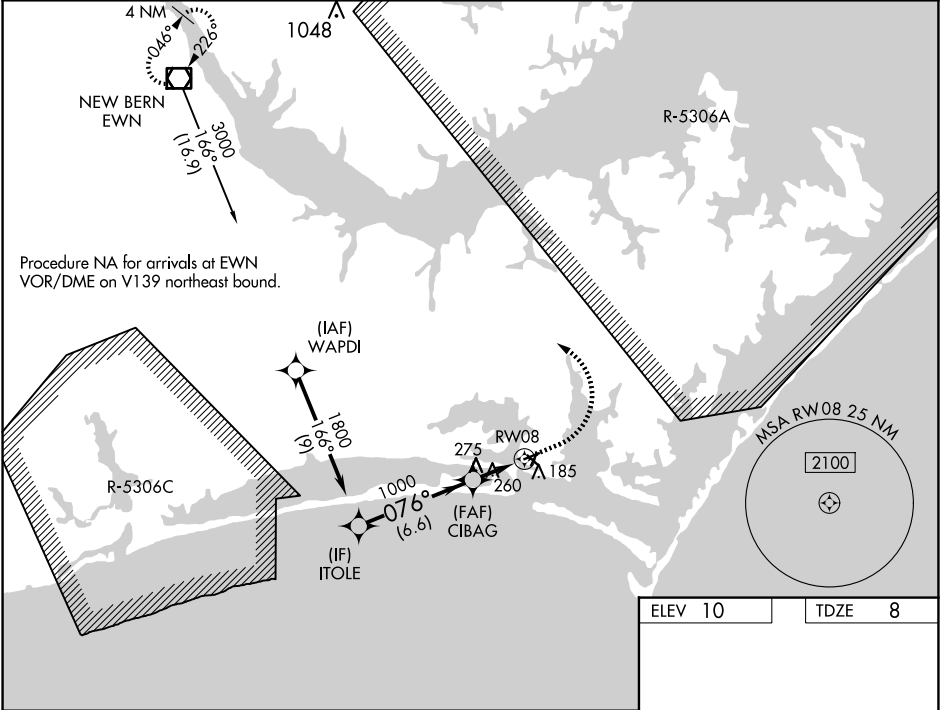
⚠

⚠

ATC clearance required to penetrate R-5306A and R-5306C.  
Rwy 8, helicopter visibility reduction below 1 SM NA.  
Straight-in Rwy 8 NA at night, Circling Rwy 8, 14, 32 NA at night.

MISSED APPROACH: Climb to 600 then climbing left turn to 3000 direct EWN VOR/DME and hold.

ASOS <b>135.375</b>	CHERRY POINT APP CON <b>132.575 299.6</b>	CLNC DEL <b>125.65</b>	UNICOM <b>122.8 (CTAF) 0</b>
------------------------	--	---------------------------	---------------------------------



ITOLE

1800

076°

CIBAG

1000

3.00° TCH 45

RW08

600

3000

EWN

CATEGORY	A	B	C	D
LP MDA	520-1	512 (600-1)	520-1 $\frac{3}{8}$	512 (600-1 $\frac{3}{8}$ )
LNAV MDA	540-1	532 (600-1)	540-1 $\frac{1}{2}$	532 (600-1 $\frac{1}{2}$ )
CIRCLING	540-1	530 (600-1)	580-1 $\frac{1}{2}$ 570 (600-1 $\frac{1}{2}$ )	620-2 610 (700-2)

5004 X 100

4001 X 100

4192 X 150

076°

3

3

REIL Rwys 8 and 26 0

MIRL Rwys 3-21 and 8-26 0