

APP CRS
141°

Rwy Idg **4001**
TDZE **9**
Apt Elev **10**

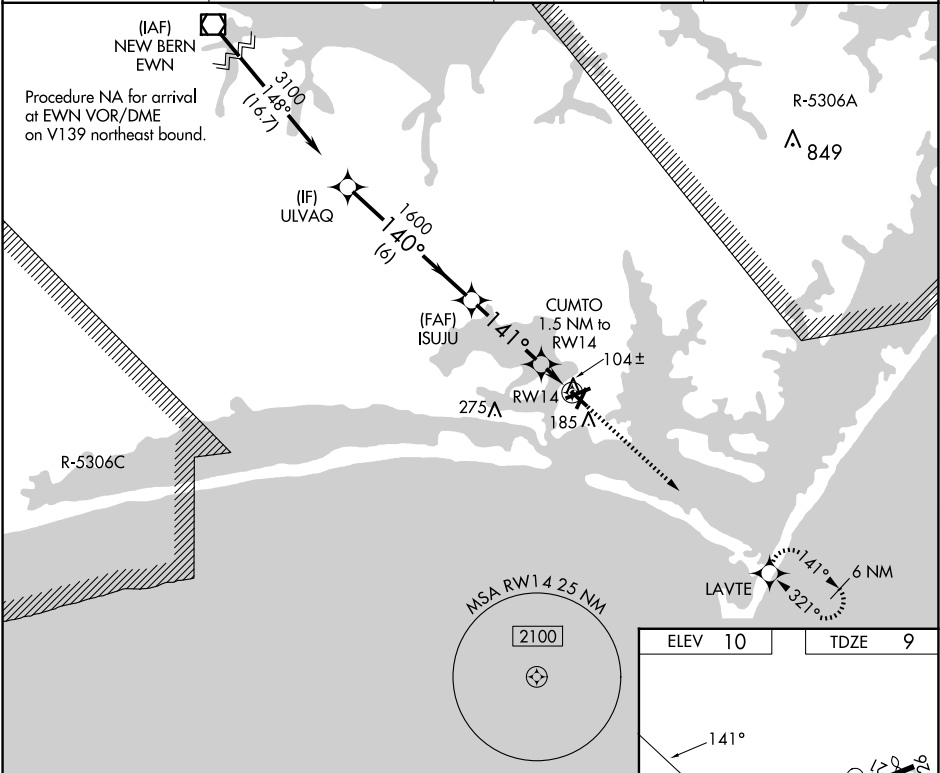
RNAV (GPS) RWY 14

MICHAEL J SMITH FLD (MRH)

DME/DME RNP-0.3 NA. ATC clearance required to penetrate R-5306A and R-5306C. When local altimeter setting not received, use Cherry Point MCAS (Cunningham Fld) altimeter setting and increase all MDA 40 feet; increase LNAV Cats C and D visibility ½ mile. Straight-in Rwy 14 NA at night, Circling Rwy 8, 14, 32 NA at night. Rwy 8, 14, 32 helicopter visibility reduction below 1 SM NA.

MISSED APPROACH:
Climb to 2300 direct
LAVTE and hold.

ASOS 135.375	CHERRY POINT APP CON 132.575 299.6	CLNC DEL 125.65	UNICOM 122.8 (CTAF) 0
------------------------	--	---------------------------	---------------------------------



ULVAQ

3100

140°

ISUJU

1600

141°

CUMTO

1.5 NM to RW14

520

3.00° TCH 40

2300

LAVTE

6 NM

3.4 NM

1.5 NM

CATEGORY	A	B	C	D
LNAV MDA	360-1 351 (400-1)			
CIRCLING	540-1 530 (600-1)	580-1½ 570 (600-1½)	580-2 570 (600-2)	

ELEV 10

TDZE 9

141°

5004 X 100

4001 X 100

4192 X 150

3

32

REIL Rwy 8 and 26 0
MIRL Rwy 3-21 and 8-26 0